



Moser

KARLSBAD
1857

WELCOME
TO THE CRYSTAL
WORLD OF MOSER

04
MOSER DNA

20
CONTEMPORARY / DECORATIVE ARTWORKS

74
CLASSIC / DECORATIVE ARTWORKS

116
MASTERPIECES

146
HERITAGE

152
CONTEMPORARY / DRINKING SETS

188
CLASSIC / DRINKING SETS AND ACCESSORIES

238
HERITAGE / DRINKING SETS

260
CUSTOM PRODUCTION

268
IN VIP SOCIETY

HISTORY

One winter day in 1857, a talented engraver opened his own workshop in Karlsbad.

As time went on, the word of his exceptional works spread beyond the peaceful Czech town, and his creations gradually became sought after by royal families, statesmen and art collectors.



Vienna 1873

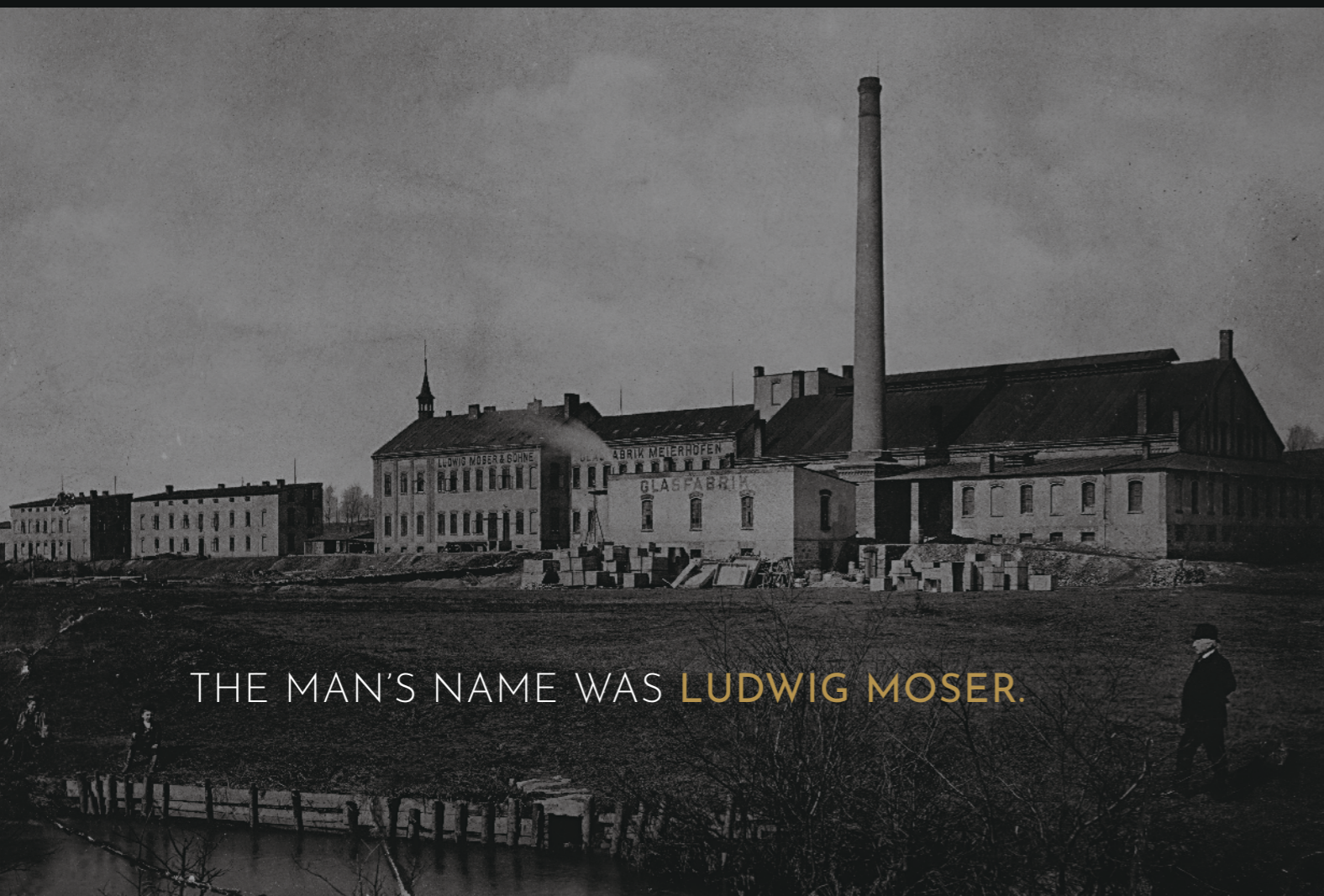


Paris 1889



Chicago 1893

AWARDS FROM WORLD EXPOSITIONS



THE MAN'S NAME WAS **LUDWIG MOSER.**



The glassworks around 1895. In the foreground stands Ludwig Moser himself.

His vision, as well as his remarkable craftsmanship, elevated glass art to an unprecedented level.

EVEN AFTER 160 YEARS, WE ARE TRUE TO HIS VALUES. THE LEGACY OF OUR FOUNDER IS APPARENT IN EVERY WORK OF ART THAT LEAVES MOSER GLASSWORKS. RESPECT TO ARTISTIC TRADITION MAKES US A RENOWNED PRODUCER OF LUXURY CRYSTAL. THAT IS WHY THE MOSER BRAND IS KNOWN AND ADMIRER ALL AROUND THE WORLD.

WE CONTINUE THE LEGACY
OF MASTERFUL CRAFTSMANSHIP
THAT DEFINED AN ERA
AND STILL CAPTIVATES
NEW GENERATIONS.

WE HAVE PLEDGED
TO KEEP THIS TRADITION ALIVE
AND NURTURE IT.

1857

On a winter day, a talented glass engraver opens a workshop in Karlsbad (Karlovy Vary). He is 24 years old and just concluded his apprenticeship with Mattoni and Hoffmann – two glassmaking masters of their time.

1873

Word of Ludwig Moser's unparalleled craftsmanship and artistic mastery reaches beyond the confines of the spa town. After his success at the Vienna World's Fair, Emperor Franz Joseph I of Austria appoints him the purveyor to the court.

1900

Moser's work finds great success at the Paris Exposition. His glassworks are visited by Persian Shah Mozaffar ad-Din during his travels in Europe. The Shah becomes enamoured with

Moser crystal and soon awards Ludwig Moser a major personal distinction and the title of a purveyor to the court.

1906

Moser's vase collection wins the first prize at the Milan International Exhibition. Its combination of engraved floral motifs and colourful inlays created vividness and depth never before seen in glass art.

1908

Thanks to the success of the "Royal" set, Moser becomes the purveyor to the court of British King Edward VII.

1916

After Ludwig Moser's death, the ownership of the glassworks passes to his brothers Leo,

Richard and Gustav. Leo Moser, the technical (1908) and art (1916) director of the glassworks, becomes a pioneer of new types of coloured glass, which he created by experimenting with adding precious metal oxides. His art inspires following generations of designers.

1923

Leo Moser personally presents Pope Pius XI with a vast drinking set featuring his engraved papal armorial. From that moment on, the set is known under the name Pope.

1940

Moser wins the Grand Premio award at the seventh Milan Triennial. He receives the award for sophisticated vases designed by architect and designer Wolfgang von Wersin.

1957

Moser celebrates 100 years of producing crystal and founds the Giant Sniffers Club. Its proud members included King Juan Carlos I of Spain, Japanese Princess Sayako or Louis Armstrong.

1958

A Moser crystal collection receives another Grand Prix award, this time at the Brussels World's Fair.

1960–2000

Several generations of artists collaborating with Moser or the glassworks became the living legends of the glassmaking world. These include, for example, Ludvika Smrčková, René Roubíček, Luboš Metelák, Vratislav Šotola, Vladimír Jelínek or František Vízner. Engravings

made by Vladimír Skála, Milan Holubek, Tomáš Lesser, Vlastimil Selinger and Roman Chalupka are admired to this day in Japan, Hong Kong, Singapore or Taiwan.

1992

The Copenhagen drinking set becomes the exclusive drinking collection of Czech embassies all around the globe.

2000

Tono Stano designs a new award for the Karlovy Vary International Film Festival. The figure of a woman holding a perfect crystal ball is owned by the likes of Robert Redford, John Malkovich, Judi Dench, Morgan Freeman or Jude Law.

2004

The Copenhagen drinking set shines at the royal wedding in Spain, while the Splendid collection brings radiance to the royal wedding in Copenhagen.

2012

The Pear vase created by Lukáš Jabůrek receives the Public Award at Czech Grand Design, awarded by the Academy of Design of the Czech Republic. It quickly becomes one of the glassworks' best-sellers.

2020

The French minister of culture inducts master engraver Tomáš Lesser into the Ordre des Arts et des Lettres. Moser glassworks continue refining the art of decorating interior spaces, commemorating major events and elevating the glassmaking art to ever greater heights.

WHAT MAKES MOSER UNIQUE?

COLOUR THAT TRANSFORMS THE ENERGY OF THE SPACE

Moser glassworks have become renowned for unique colours. These are the result of perfectly balanced ratios of metal and rare earth oxides in the glass. The distinctiveness and perfection of our works of art appeal to royal families, collectors and lovers of fine arts to this day.



A glassmaker is seen in profile, working in a large, dark furnace. The interior of the furnace is brightly lit with a warm, orange glow, and a glowing piece of glass is being worked on. The scene is dimly lit, with the primary light source being the furnace itself.

SINCE 1893 MOSER USES EXCLUSIVELY LEAD-FREE CRYSTAL

No other type of glass is harder to work with. If the glassmaker wishes to master the technique of working with clear glass rich in potash, they have to prepare for entire decades of effort. But such dedication brings invaluable rewards.

A close-up shot of a glassmaker's hands working on a piece of glass. A bright, blue flame is applied to the glass, which is being held in a wooden mould. The glass is being shaped and polished, and the scene is dimly lit, with the primary light source being the flame.

HANDMADE SINCE 1857

The sets radiate the joy of an artist who managed to create a work of art of lasting value. Everything is created by the hands of our master craftsmen using traditional methods. These undying qualities are what made Ludwig Moser one of the world's most important producers of crystal. That is why our wooden moulds are still made by hand and why you will never see automated machines in our workshops.

FIVE GLASSMAKING
CRAFTS
UNDER
ONE ROOF



THE ART
OF HANDMADE
CRAFTSMANSHIP

Moser's glass art objects require weeks, often months of work of the best glassmakers, who together reach the very limits of their talent and perseverance.

THIS TRADITION OF COLLECTIVE CRAFTWORK IS THE SECRET BEHIND THE LASTING QUALITY OF MOSER ART. WHETHER BLOWN, CUT, ENGRAVED OR GILDED, THE SUCCESS OF OUR CRYSTAL LIES SOLELY IN THE HANDS OF MOSER GLASSMAKERS.



THE ART OF GLASS CUTTING

THE SECRET OF GLASS CUTTING IS TRADITIONALLY PASSED FROM GENERATION TO GENERATION.

Perfecting it requires not only years of practice and great talent but also physical strength that would allow the artist to work with pieces often weighing dozens of kilograms. This rare combination is reflected beautifully on the surface and facets of all Moser works of art.



THE ART OF GILDING

24-carat gold and platinum hold a privileged position in Moser. Painters meticulously apply a metallic solution onto the crystal to create luxurious rims, complex patterns and opulent décors.

PERFECTION DOES NOT COME ON ITS OWN, IT TAKES YEARS TO ACQUIRE THE NECESSARY SKILL TO WORK WITH SUCH A RARE MATERIAL.



THE ART OF ENGRAVING

In Moser, the best engravers create bold, dynamic and aesthetically breathtaking artworks.

THEY ARE THE DRIVING FORCE BEHIND THE BIRTH OF MANY OF THE MOST FAMOUS WORKS OF GLASS ART OF THE MODERN AGE.

Through their passion, a craft that has nearly faded into obscurity remains full of life to this day.



THE ART OF GLASS PAINTING

THIS DIFFICULT ART WAS ONCE ONE OF THE MOST WIDESPREAD METHODS OF DECORATING GLASS IN EUROPE.

In Moser, we consider glass painting a regal technique, which is why we have been cultivating it since the very founding of the glassworks. The detailed artworks of our painters continue to delight new generations of art experts on and on.



TOMÁŠ LESSER

In February 2020, master engraver Tomáš Lesser received a prestigious award from the French Republic for his contributions to art: he became a Knight of the Ordre des Arts et des Lettres.

Lesser has been with Moser for over 25 years, and we are proud to have a number of his unique works of art in our portfolio. Artistic engravings on vases and bowls are created over the course of weeks. Every piece is then signed by its author and accompanied by a certificate of origin.

T Lesser

"IF I WERE TO SPEAK GRANDLY, I'D SAY THAT I CREATE BEAUTY IN A BEAUTIFUL MATERIAL. BUT MOSTLY, IT'S A JOB AND A CRAFT FOR ME, I BOTH ENJOY IT AND DO IT FOR A LIVING. AND ISN'T THAT IDEAL?"



CONTEMPORARY

DECORATIVE ARTWORKS

THESE WORKS ARE CHARACTERISED BY A SIMPLIFIED CUT AND A MORE PRONOUNCED ROLE OF SILHOUETTES. THEY SUBSTITUTE ORNAMENTAL DECORATIONS WITH MORE DELICATE PATTERNS. THE POPULARITY OF CLEAR CRYSTAL ART PIECES IS EVER-INCREASINGLY RIVALLED BY THE INTEREST IN VARIATIONS OF THE MAGICAL MOSER COLOURS.

In the past, these artworks were designed for Moser by renowned glass artists such as František Vízner, Stanislav Libenský or Miluše and René Roubíček. Many of their works can be seen in domestic and foreign galleries and collections.

Likewise, their designs decorate countless residences and households. The success of these greats was later followed by Jiří Šuhájek, Rony Plesl, Lukáš Jabůrek, Jan Čtvrtník, Kateřina Doušová, Patrik Illo or Ingrid Račková with David Suchopárek.



LUKÁŠ JABŮREK

Glassmaker and the Art Director of Moser glassworks between 2013 and 2018.

Winner of the Public Award at the prestigious Czech Grand Design Awards 2012 for the Pear and Kolorit vase designs. His works of art for Moser glassworks are highly sought-after.

PEAR

DESIGN: 2012

A BRILLIANT ATTRACTION

"A well-cut brilliant firmly holds its inclined surface. The precisely cut edges evoke an outwardly strict and exacting appearance, but inside lies a pure soul. The Pear is, at the same time, a sitting figure, a friend who will never abandon you," says the author.



Vase, cat. no. 3196, width (upper rim) x height: 3.4 x 13 cm, 7.5 x 20 cm, 13 x 30 cm / 1.3 x 5.1 in, 3 x 7.9 in, 5.1 x 11.8 in.
Colours: beryl underlaid with blue, alexandrite underlaid with rose (see photo), aquamarine underlaid with reseda.



The success of the Pear vase is followed by a bowl of similarly pronounced design. The confident cut of the robust crystal body is highlighted in traditional Moser colours and further enhanced by underlaid hues. Two bowl sizes in three colour combinations allow you to choose the right piece for any interior.

—



Bowl, cat. no. 3448 (see photo), width (upper rim) x height: 27 x 10 cm / 10.6 x 3.9 in. Bowl, cat. no. 3447, width (upper rim) x height: 11 x 11 cm / 4.4 x 4.3 in. Colours: beryl underlaid with blue, alexandrite underlaid with rose (see photo on the right), aquamarine underlaid with reseda.

STONES

DESIGN: 2015

FRAGILE AS A STONE

The vases and bowl from the Stones set are a brilliant showcase of the artistry of Karlsbad glassmakers and glass cutters. Due to irregularly cut and precisely polished facets, their compact shape transforms into a playful kaleidoscope that provokes your imagination.



Bowl, cat. no. 3293, width (upper rim) x height: 35 x 10 cm / 13.8 x 3.9 in. Vase, cat. no. 3292, width (upper rim) x height: 9 x 40.5 cm / 3.5 x 15.9 in. Vase, cat. no. 3268, width (upper rim) x height: 5.7 x 13 cm, 11.9 x 31 cm / 2.2 x 5.1 in, 4.7 x 12.2 in. Colours: alexandrite underlaid with green, alexandrite underlaid with reseda, beryl underlaid with rose (see photo on the left - colours listed from the left), alexandrite underlaid with rose.

CAORLE

DESIGN: 2015



A REFINED GEM IN EVERY RESPECT

The ingeniously cut Caorle vase received a prestigious award for masterful craftsmanship at the 2019 Tableware International Awards of Excellence in Frankfurt. It received its well-deserved admiration not only for its precise optical cut but also its enthralling combination of green and rose hues, giving the object astonishing depth.

"My main inspiration was architecture as well as textures that can be transformed into cut décors," adds the author.

Vase, cat. no. 3211, width (upper rim) x height: 6.3 x 13 cm, 14.5 x 30 cm / 2.5 x 5.1 in, 5.7 x 11.8 in. The vases are available in ocean green underlaid with rose.





Bowl, cat. no. 3451 (see photo), width (upper rim) x height: 32.5 x 10 cm / 12.8 x 3.9 in. Bowl, cat. no. 3452, 19 x 9 cm / 7.6 x 3.5 in. Bowl, cat. no. 3459, 14.5 x 8 cm / 5.7 x 3.1 in. The bowls are available in ocean green underlaid with rose.

MONTAGNE

DESIGN: 2021



A SCULPTURE CARVED FROM CRYSTAL

The striking Montagne vase brightens the room like an icy massif in the rising sun. After all, it takes its name from the French word for mountain. Its distinctive cut evokes mountain peaks, while its colours conjure up the image of sunrays on icy walls.

The thick-walled design is a staple of designer Lukáš Jabůrek and fully highlights the optical properties of crystal in aurora and alexandrite shades.

Vase, cat. no. 3211, width (upper rim) × height: 6.2 × 13 cm and 14 × 30 cm / 2.5 × 5.1 in and 5.5 × 11.8 in. Colour: alexandrite underlaid with aurora.





CONE

DESIGN: 2017

This series of compact vases by Lukáš Jabůrek is characterised by a contrasting core and a deep trace of the cutting wheel, which creates a scintillant, scale-like structure on the surface.

The endless kaleidoscope of mirror reflections will draw you into its depths by the interplay of striking Moser colours.

Vase, cat. no. 3404, width (upper rim) x height: 11 x 26 cm / 4.3 x 10.2 in. The vases are available in these colour combinations: topaz underlaid with rose, alexandrite underlaid with rose (see photo - colours from the left), aquamarine underlaid with yellow opal.

IKEBANA

DESIGN: 2009

These inventively cut vases with three openings on the sides offer three gazes into the world of crystal architecture. Let them inspire you to create new memories and original floristic arrangements. No need to limit yourself solely to Japanese classics.



Vase, cat. no. 2346, width (upper rim) x height: 28.1 x 27 cm / 5.8 x 9.4 in. The vases are available in clear crystal and all basic colours. Colours on the photo - eldor, 3 holes and beryl, 9 edges, 3 holes (from the left).

ROUGE

DESIGN: 2012

The combination of an original design, masterful cut and inimitable colours opens a new perspective on the possibilities of Moser crystal.

The seemingly simple yet, in fact, ingeniously composed shape creates a high-on organic look. Due to the optics of pure crystal, items from this set can transform into exceptionally radiant gemstones.



Bowl, cat. no. 3177, width (upper rim) x height: 25 x 19.3 cm / 10 x 7.1 in. The set also includes a vase, cat. no. 3211, width (upper rim) x height: 14.5 x 30 cm / 5.7 x 11.8 in. The bowl and the vase are available in all basic colours in combination with white enamel.



BUBBLES

DESIGN: 2012



Similarly to the Planet Moser set, the Bubbles set builds on the motif of precisely cut spherical lenses. Alexandrite underlaid with any of the other unique Moser colours lends astounding airiness to the design and lets light complete the look of the piece. Despite the considerable weight of the crystal mass, the resulting shape looks as light as air bubbles rising to the surface.

Bowl, cat. no. 3177, width (upper rim) x height: 25 x 19.3 cm / 9.8 x 7.6 in. Vase, cat. no. 3211, width (upper rim) x height: 14.5 x 30 cm / 5.7 x 11.8 in. The vase and bowl are available in these colour combinations: alexandrite underlaid with amethyst (photo on the left), alexandrite underlaid with rose, alexandrite underlaid with white opal (photo on the right).



HEART

DESIGN: 2017

This rosalin heart made of pure Moser crystal can become a luxurious gift that is worth a thousand words.

The precise cut highlights the beautiful optics of the exclusive rosalin.

Object, cat. no. 55204, width (at the top) × height: 13.5 × 10 cm, 27.5 × 20.5 cm / 5.4 × 3.9 in, 10.8 × 8.1 in. The objects are available in clear crystal and in basic colours.

SWEET

DESIGN: 2014

Thanks to their colour, the vase and bowl from the Sweet set evoke memories of chewing gum, sweets and lollipops smelling of raspberries or perhaps cherries.

The set's designer Lukáš Jabůrek confessed: "I wanted to evoke the leisurely atmosphere of afternoon tea with pancakes and other sweets from grandma. This memory is sprinkled with the sugar of fairy tales and its smell captured in our crystal."



Vase, cat. no. 3267, width (upper rim) × height: 20 × 32 cm / 7.9 × 12.6 in. Bowl, cat. no. 3866, width (upper rim) × height: 28.5 × 12 cm / 11.2 × 4.7 in. The vase and bowl are available in alexandrite underlaid with rose.

BRIDGE

DESIGN: 2015 / 50-PIECE LIMITED EDITION

This elegantly arching bridge is the work of Lukáš Jabůrek. It connects two banks, two different worlds trying to find their way to each other.

"It's a symbol of friendship that lasts forever. A firm bond between two hearts. It shows us where to go so that we are not alone," explains the designer.



Vase, cat. no. 3295, width (upper rim) x height: 70 x 50 cm / 27.6 x 19.7 in. The vase is available in these colour combinations: clear crystal with smoke and a combination of all basic colours.



CITY

DESIGN: 2014

The inspiration behind Lukáš Jabůrek's design from 2014 is evident at first glance. You can arrange the individual crystal buildings into right-angled streets, a city square or any other composition.

Become an architect for a moment and find a vase that will suit your interior the most.

Vase, cat. no. 3248, width (upper rim) x height: 8 x 30 cm / 3.1 x 11.8 in. Vase, cat. no. 3251, width (upper rim) x height: 6 x 25 cm / 2.4 x 11.1 in. Vase, cat. no. 3249, width (upper rim) x height: 8 x 35 cm / 3.1 x 13.8 in. The set also includes another vase, cat. no. 3250, width (upper rim) x height: 16 x 25 cm / 6.3 x 11.1 in and a bowl, cat. no. 3252, width (upper rim) x height: 24 x 15.5 cm / 10.4 x 6.1 in. Colours: beryl underlaid with blue and alexandrite underlaid with aurora.



RONY PLESL

One of the most famous contemporary Czech designers. He graduated from the Academy of Arts, Architecture and Design in Prague, where he later returned to head the studio of glass.

His Cubism set follows up on the Moser tradition of cut glass from the 1930s.

CUBISM

DESIGN: 2009 / RONY PLESL



THERE IS A CUBIST IN ALL OF US

The irregular morphology of the Cubism set makes use of all the advantages of masterful manual glass cutting. The typical angled surfaces do not adhere to strict symmetry, making each piece an original. "I always aim for my stuff to have a story. Where emotions end, design begins," says the author about his work.





VASE
CLEAR CRYSTAL

5.7 x 30 cm
2.2 x 11.8 in
3153



VASE
BERYL

5.7 x 30 cm
2.2 x 11.8 in
3153



VASE
AQUAMARINE

5.7 x 30 cm
2.2 x 11.8 in
3153



VASE
TOPAZ

5.7 x 30 cm
2.2 x 11.8 in
3153



VASE
ALEXANDRITE

5.7 x 30 cm
2.2 x 11.8 in
3153



BOWL
CLEAR CRYSTAL

29 x 10 cm
11.4 x 3.9 in
3154



BOWL
BERYL

29 x 10 cm
11.4 x 3.9 in
3154



BOWL
AQUAMARINE

29 x 10 cm
11.4 x 3.9 in
3154



BOWL
TOPAZ

29 x 10 cm
11.4 x 3.9 in
3154



BOWL
ALEXANDRITE

29 x 10 cm
11.4 x 3.9 in
3154



IRDS STUDIO

The Czech-Slovak IRDS brand consists of life and creative partners Ingrid Račková and David Suchopárek. Ingrid comes from Liptovský Mikuláš, Slovakia, and David from Rakovník, Czech Republic. They are both graduates of the Academy of Arts, Architecture and Design in Prague.

They successfully collaborate with Moser glassworks on limited editions of monumental glued and cut vases, which also serve as interior sculptures.

MELODY

DESIGN: 2017 / 100-PIECE LIMITED EDITION

The monumental cut object consists of five colourful vases. Their perfectly aligned walls, base and tip form an elegantly undulated silhouette. Delicate transitions of basic Moser colours harmonise with precisely made cuts. Like in music, the whole composition forms a melody from individual tones and harmonies. The virtuosic rendition of the design score comes from the hands of true glassmaking masters.



Vase, cat. no. 3392, width x height: 24.1 x 80 cm / 9.5 x 31.5 in. The vase is available in clear crystal combined with five basic or underlaid colours.



FEATURE

DESIGN: 2013 / 50-PIECE LIMITED EDITION

This monumental object consists of four vases and five blocks cut along a diagonal curve. The dynamic outline is supported by bearing wedges, out of which rises the refracted vertical of the piece.

Moser colours and underlying strip the geometrically precise shapes of their strictness, shrouding them instead in a gown of gentle elegance.

Vase, cat. no. 3215/A, width x height: 48.5 x 85 cm / 19.1 x 33.5 in. Vase, cat. no. 3215/B, width x height: 48.5 x 85 cm / 19.1 x 33.5 in. The vase is available in these colour combinations: beryl, aquamarine underlaid with white opal (see photo) and alexandrite, rosalin underlaid with white opal.



NYMPH

DESIGN: 2015 / 50-PIECE LIMITED EDITION

Looking at the monumental Nymph vase reveals unbridled sea waves running against the cliffs but also the calm surface of a creek on a windless day.

Perhaps you may hear the siren song, irresistibly inviting sailors to brave the horizon, or see their dance over the treacherous depths.

Vase, cat. no. 3301, width x height: 48.4 x 87 cm / 19.1 x 34.3 in. The vase is available in colour combination: alexandrite, aquamarine.



The tall sculpture consists of five precisely cut vases in beryl and topaz shades. The blossoms build on one another in a harmonic composition, which lends the geometrically designed piece a highly organic look.

FIORENTE

DESIGN: 2011 / 50-PIECE LIMITED EDITION

In 2014, Fiorente won first place in the prestigious Wallpaper Design Award competition. The jury, consisting of renowned personalities of world architecture, art and design, included such names as singer and fashion designer Victoria Beckham or film director and screenwriter Spike Jonze.



Vase, cat. no. 3192, width x height: 52 x 81 cm / 20.5 x 31.9 in. The vase is available in colour combination: clear crystal, beryl, topaz.



JIŘÍ ŠUHÁJEK

A respected glass designer and academic painter capable of not only designing but also making his works of art. A student of Professor Libenský at the Academy of Arts, Architecture and Design in Prague and a graduate of the London Royal College of Art.

He worked for Moser glassworks between 1972 and 1978 as principal designer.

He has received many domestic and foreign awards for his design and fine arts production.

THE FOUR ELEMENTS

DESIGN: 2016

CRYSTAL ELEMENTS BY ŠUHÁJEK

"They are four, and one could not exist without the others. They give the world life, energy and beauty every day. They are irreproducible and sometimes treacherous. It is wise to approach them with humility and the knowledge that all that is around us is no accident," says the author about his unique creation, a quartet or unique vases – sculptures inspired by air, water, fire and earth.



Air, cat. no. 2919, width x height: 28.5 x 25 cm / 11.2 x 9.8 in, colour: alexandrite underlaid with white opal, eldor, alexandrite.
 Fire, cat. no. 2920, width x height: 19.5 x 25 cm / 7.7 x 9.8 in, colour: alexandrite underlaid with orange opal. Earth, cat. no. 2921,
 width x height: 16 x 25 cm / 6.3 x 9.8 in, colour: alexandrite underlaid with yellow opal. Water, cat. no. 2922, width x height:
 23 x 25 cm / 9 x 9.8 in, colour: clear crystal underlaid with blue, base: alexandrite.



BARIEL

DESIGN: 2012
LIMITED EDITION

The successful Bariel set of vases, characterised by the shape of an asymmetrical hourglass, was designed by Jiří Šuhájek back in 2000. It then received new colour variations in 2012.

The elegant gradients of popular Moser colours and opals create magical effects on the widening body. Soft, diffused light can make Bariel vases look as if they just stepped out of a Jan Zrzavý painting.

Vase, cat. no. 2959, width x height: 19.7 x 30 cm / 7.8 x 11.8 in. The vases are available in these colour combinations: alexandrite underlaid with rose (see the photo), alexandrite underlaid with jade green, aquamarine underlaid with white opal. Limited edition: 100 pieces of each colour.



THE FOUR SEASONS

DESIGN: 1998

These vases of minimalist shape combine Moser colours into hues inspired by the typical values of individual seasons.

Aside from colours, these vases are typical by the contrast between the core and the shell. On the inside lie round shapes created by the glassblower's breath, while the outside is dominated by the sharp edges of the masterful cut.

Vase, cat. no. 2900, width x height: 13 x 16 cm, 20 x 24 cm / 5.1 x 6.3 in, 7.9 x 9.4 in. The vases are available in these colour combinations: alexandrite underlaid with jade green, alexandrite underlaid with white opal, eldor underlaid with jade green, clear crystal underlaid with white opal. Colours listed from the left.

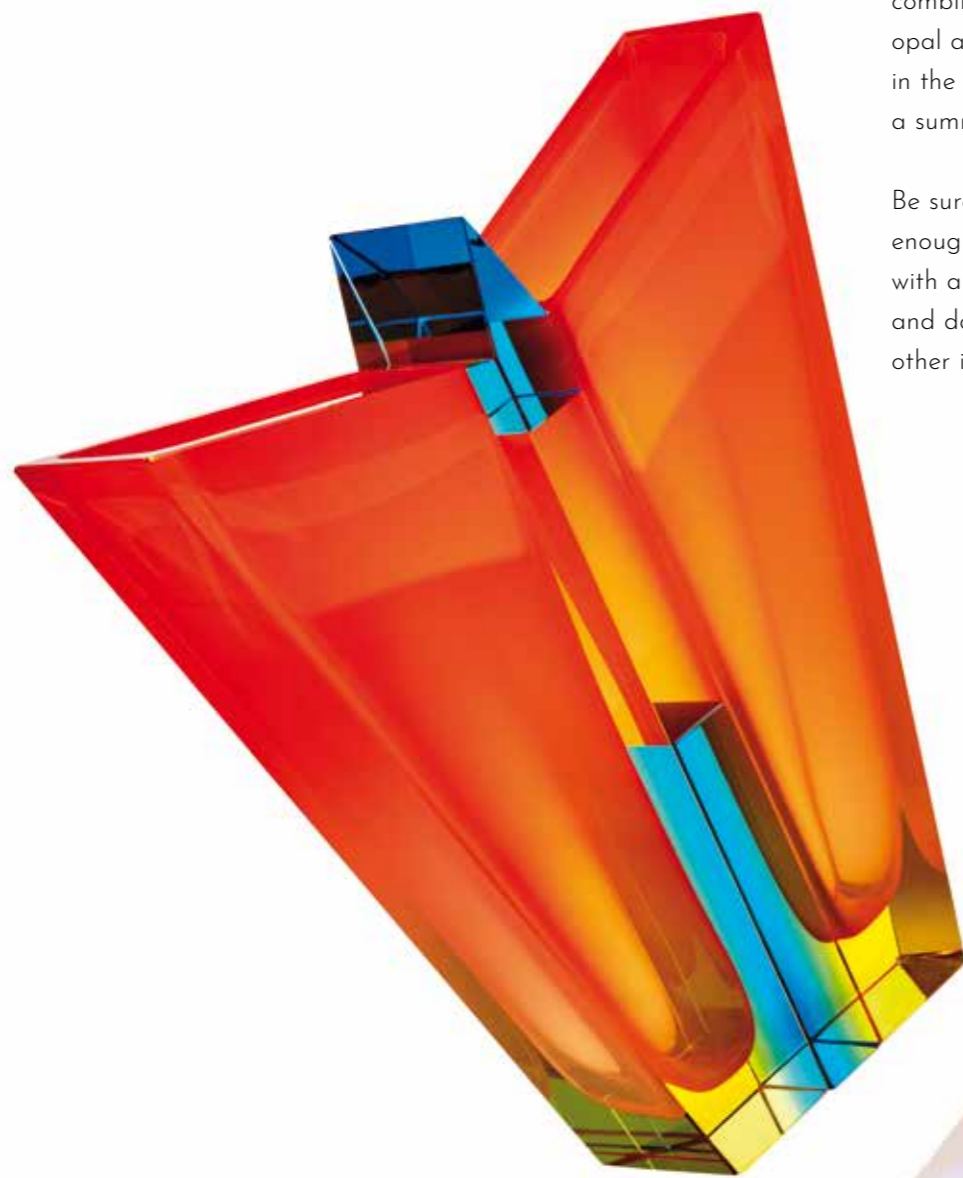
BUTTERFLY

DESIGN: 2004 / 150-PIECE LIMITED EDITION

THE BRAZEN BEAUTY OF ENTOMOLOGY

The slightly extravagant combination of eldor, orange opal and aquamarine will twinkle in the sun like a butterfly over a summer meadow.

Be sure to put it in a spot with enough light. It will reward you with a magical play of glimmers and dancing colours like none other in the realm of crystal.



Vase, cat. no. 3246, width x height: 32.2 x 36 cm / 12.7 x 14.2 in.
The vase is available in colour combination: aquamarine, eldor underlaid with orange opal.

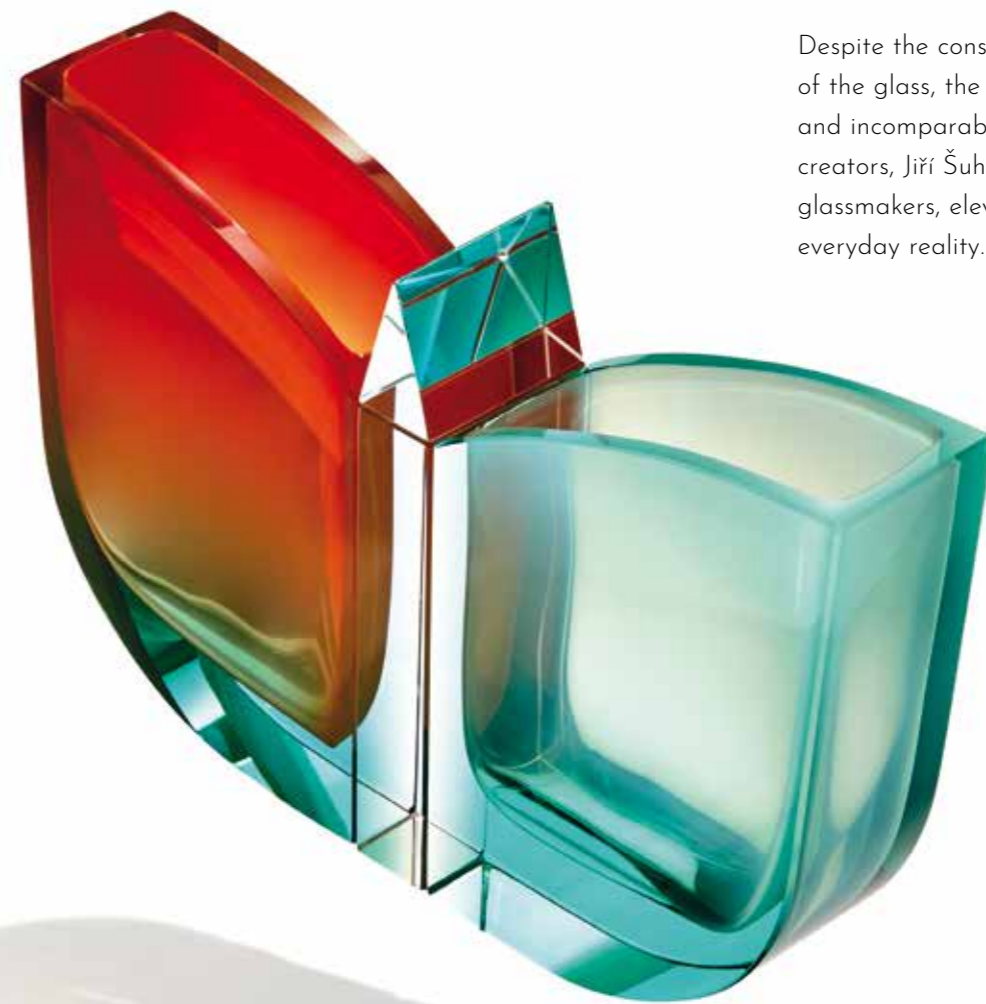
ADMIRAL

DESIGN: 2015 / 100-PIECE LIMITED EDITION

ON THE WINGS OF FANTASY

This precisely cut and cold-fused glass sculpture is inspired by the elegance and colour of butterfly wings.

Despite the considerable weight of the glass, the imagination and incomparable skill of its creators, Jiří Šuhájek and Moser glassmakers, elevate it above everyday reality.



Vase, cat. no. 3299, width x height: 41 x 29.5 cm / 16 x 11.6 in. The vase is available in colour combination: clear crystal, beryl underlaid with white opal, beryl underlaid with orange opal.



KATEŘINA DOUŠOVÁ

A designer specialising in product and interior design. She also focuses on renovations of historic spaces, such as Café Louvre in Prague.

She has been collaborating with Moser since 1999. Through sheer intuition, she has managed to follow up on Moser works from the 1970s and discover new possibilities of using traditional techniques.

ELLIPSE

DESIGN: 2020

VELVET REVOLUTION

This collection by the successful designer catches the eye at first glance by the deep hues of beryl or aquamarine underlaid with amethyst, or alexandrite underlaid with reseda. In terms of its shape, it is reminiscent of the successful Gema set but is a more playful interpretation of geometrically cut blocks. The crystalline purity of the design combined with a velvet-smooth colour scheme becomes a magnet for the eye.



Vases, cat. no. 3435, width x height: 11.6 x 28 cm / 4.6 x 11 in (half-lens cut). The vases are available in these colour combinations: aquamarine underlaid with amethyst (see photo), beryl underlaid with amethyst and alexandrite underlaid with reseda.

AMPHORA

DESIGN: 2020

— This playful interpretation of the iconic shape draws on the brilliance of the cut. Amphora is a respectful yet confident quote of the immortal antique principle. The typical rounded curves blend with sharp edges to create a remarkable contrast.



VASE
AQUAMARINE UNDERLAID
WITH AMETHYST

11.6 x 28 cm
4.6 x 11 in
3435 / round-edged cut



VASE
BERYL UNDERLAID
WITH AMETHYST

11.6 x 28 cm
4.6 x 11 in
3435 / round-edged cut



VASE
ALEXANDRITE UNDERLAID
WITH RESEDA

11.6 x 28 cm
4.6 x 11 in
3435 / round-edged cut

FACET

DESIGN: 2020

— The edges of the vertical sides of each vase are disturbed by a geometric cut, which allows us to gaze deeper into the soul of the object, though it will not reveal to us all its secrets.



VASE
AQUAMARINE UNDERLAID
WITH AMETHYST

11.6 x 28 cm
4.6 x 11 in
3435 / straight-edged cut



VASE
BERYL UNDERLAID
WITH AMETHYST

11.6 x 28 cm
4.6 x 11 in
3435 / straight-edged cut



VASE
ALEXANDRITE UNDERLAID
WITH RESEDA

11.6 x 28 cm
4.6 x 11 in
3435 / straight-edged cut



GEMA

DESIGN: 2000

Gema surprises with its original shape and cunning optics. The unusual contrast of inner and external lines allows the beauty of underlaid Moser colours to shine bright.

Through its smooth, spherical cut, Gema is reminiscent of a perfect crystal jewel hiding an organic, droplet-like core on the inside. The polished sides of the shell and precisely constructed facets let your eye pierce to the very crux of the matter.

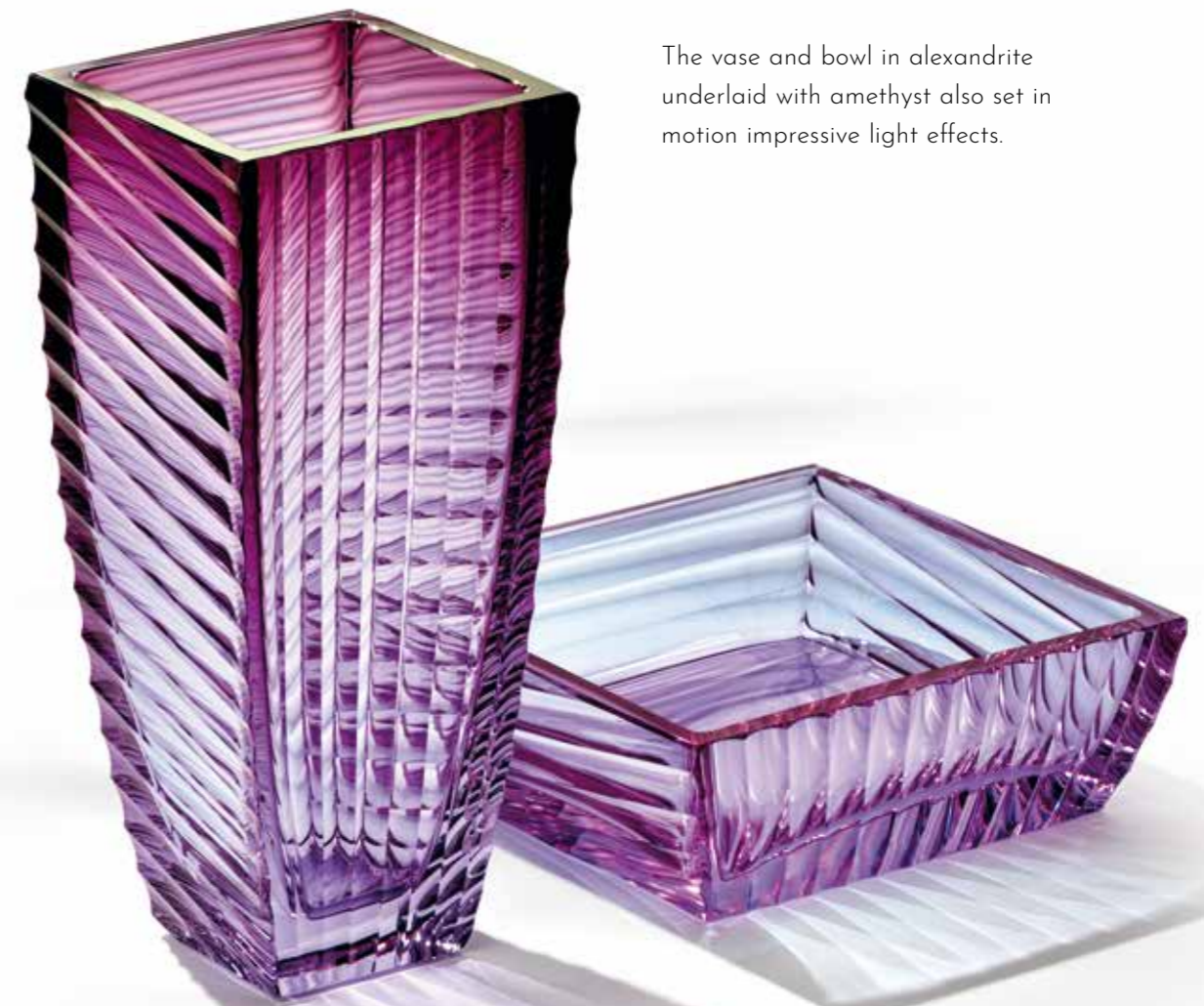
Vase, cat. no. 2965, width (upper rim) x height: 5 x 13 cm, 10.5 x 25.5 cm / 2 x 5.1 in, 4.1 x 10.2 in. The vase is available in these colour combinations: alexandrite underlaid with rose, aquamarine underlaid with reseda, beryl underlaid with reseda, aquamarine underlaid with rose (see picture from the left), alexandrite underlaid with amethyst, aquamarine underlaid with blue.

INTERFERE

DESIGN: 2014

"I'm fascinated by the mutual interaction and interweaving of optical structures. The design, though simple and entirely regular, constantly changes before your eyes and creates the impression of endless movement," says designer Kateřina Doušová about her set.

The vase and bowl in alexandrite underlaid with amethyst also set in motion impressive light effects.



Vase, cat. no. 3281, width x height: 15.2 x 35 cm / 6 x 13.8 in. Bowl, cat. no. 3307, width x height: 25 x 10 cm / 9.8 x 3.9 in. The vase and bowl are available in colour combinations: alexandrite underlaid with amethyst.



JAN ČTVRTNÍK

A successful designer with a vast repertoire and portfolio and boundless international purview. He combined his studies at the Academy of Arts, Architecture and Design in Prague under the tutelage of MgA. Michal Froněk and MgA. Jan Němeček (Olgoj Chorchoj) with study visits to institutions such as Vitra Design Museum, Designcentrum IKEA or NASA's Star Design Programme in Houston. He is the holder of the Grand Designer and Designer of the Year awards granted by the Academy of Design of the Czech Republic (2008).

POLYGON

DESIGN: 2018

SPECTACULARLY COLOURFUL GEOMETRY

Polygon opens a spatial play of geometric shapes, but the ingenious cut of its surfaces and sharp edges lends it a wholly organic feel. Unexpected refractions of light that pass through alternating convex and concave surfaces of the undulated walls bestow surprising dynamics onto both these vases. The effect is only further punctuated by cleverly complimentary colours.



Vases, cat. no. 3410, width x height: 22.5 x 26 cm / 8.9 x 10.2 in. Vase, cat. no. 3410, width x height: 20.5 x 26 cm / 8.1 x 10.2 in. The vases are available in these colour combinations: aquamarine underlaid with green and aquamarine underlaid with amethyst (see photo from the left).



TWIST

DESIGN: 2008 / 300-PIECE LIMITED EDITION

This robust vase created by internationally seasoned designer Jan Čtvrtník, the recipient of prestigious awards for design, including Grand Designer and Designer of the Year awarded by the Academy of Design of the Czech Republic, is among his most popular renditions for Moser glassworks.

It stands out by its combination of helically twisted cuts and a colourful core. The refraction of light on the opposing sides of the object creates a spectacular show of viridescent gleams of beryl and reseda.

Vase, cat. no. 3104, width x height: 10.2 x 21 cm / 4 x 8.3 in.
The vase is available in colour combination: beryl underlaid with reseda.

TWINSPIN

DESIGN: 2013



The unusual combination of beryl and yellow opal and the artful cut astonish by the hypnotising, seemingly endless diffractions of light. Its designer Jan Čtvrtník described the vase as follows: "I was thinking about how to combine two opposing spirals into a single object.

I began intertwining them and rotating them in my head, but I wasn't sure whether the crystal would be pliable during cutting. Thankfully, the experience of Moser glassmakers came through."

Vase, cat. no. 3228, width x height: 9 x 30 cm / 3.5 x 11.8 in. The vase is available in colour combination: beryl underlaid with yellow opal.



BYSTRO DESIGN

Bystro Design was founded by glass artists Dagmar Pánková and Leoš Smejkal in 2005.

They create their own drinking collections and decorative works of art, jewellery and custom editions for the interiors of luxury residences, hotels or ships.

ICELAND VOLCANOES

DESIGN: 2016

FIRE AND ICE IN ONE CRYSTAL BODY

This duo of robust vases came to life through a dynamic cut and intriguing contrast of underlaid Moser colours. "We were inspired by Icelandic volcanoes and their typical ice cover. The icy crystalline surface of the vases conceals the molten colours of their core, just like lava boils within the volcanic vent hidden underneath an icy crust," say the authors about their artwork.



Vases, cat. no. 3339, width x height: 16 x 30 cm / 6.3 x 11.8 in. The vases are available in these colour combinations: beryl underlaid with blue and beryl underlaid with rose (see photo from the left).



PLANET MOSER

DESIGN: 2018



—

SET OUT ON A JOURNEY
WITH MOSER GLASSMAKERS
TO LOOK FOR INSPIRATION
IN THE ENDLESS DEPTHS OF SPACE

Martin Opl's design succeeded in the Ludwig Moser Award student competition. His multi-faceted work of art offers many possibilities, whether used as a decoration, a jar or a lamp.



MONDRIAN

DESIGN: 2017

The abstract production of Piet Mondrian served as inspiration for many branches of design.

The surprising harmony of the multi-coloured surfaces in his paintings also made an impression on Moser designer Michal Kožený, whose vases from 2016 count among highly popular Moser decorative objects.

Vase, cat. no. 3374/I, width x height: 22.2 x 26.5 cm / 8.7 x 10.4 in. Vase, cat. no. 3374/II, width x height: 22.2 x 26.5 cm / 8.7 x 10.4 in. The vase is available in these colour combinations: clear crystal, aquamarine, beryl, smoke (on the right) and clear crystal, rosalin, eldor, aquamarine.

LORD'S ROCK

DESIGN: 2018

This set was inspired by the Lord's Rock in the Česká Lípa District, Czech Republic. The local basalt organ inspired both crystal blocks by their linearity and confidence.

The radical colour scheme is a gesture through which glass design enters a dialogue with mother nature.



Vase, cat. no. 3414, width x height: 19 x 36 cm / 7.5 x 14.2 in. The vase is available in these colour combinations: alexandrite underlaid with orange opal (left), clear crystal with smoke (right) and aquamarine underlaid with amethyst.

CLASSIC

DECORATIVE ARTWORKS

PIECES FEATURING SO-CALLED OROPLASTIC DECORATION, AN EMBOSSED GILDED STRIP, ARE TRUE JEWELS OF GLASSMAKING. MOSER GLASSWORKS TRADEMARKED THE TECHNIQUE IN 1919.

Today, particularly popular motifs include Amazons with acanthus leaves or floral decorations, rendered either in 24-carat gold or platinum.

A HUNDRED FORMS OF PERFECTION

AROUND 1920, MOSER PRODUCTION SAW THE PEAK OF THE INFLUENCE OF NEOCLASSICISM. THIS ART AND ARCHITECTURAL STYLE BROUGHT BACK THE FORMS TYPICAL OF ANCIENT AND RENAISSANCE ART.

THE KARLSBAD GLASSWORKS CONTRIBUTED TO THIS WAVE WITH ITS OWN SPECIALITY - COLOURED CUT CRYSTAL WITH AN OROPLASTIC STRIP.

Despite the date on their birth certificate, some designs of that time look astonishingly modern. They owe this, among other things, to the range of inimitable Moser colours and their underlaid combinations. Golden and later also platinum strips with depictions of battles between the Amazons and the Greeks find their way onto many shapes of vases, jars and jardinières, bowls and other accessories.

LEO MOSER CONTRIBUTED TO DESIGNING A CONSIDERABLE NUMBER OF THESE HIMSELF.





UNITY

DESIGN: 1920-1935

In this attractively slim vase, firmly seated in a robust crystal gemstone, one could almost see a familial resemblance to the design of the Gloria set.

Two significantly different sizes allow you to conjure up interesting compositions with this design in matching or contrasting hues.

Vase, cat. no. 577, width (upper rim) × height: 6.7 × 11.5 cm, 18.6 × 33.2 cm / 2.6 × 4.5 in, 7.3 × 13 in. The vase is available in clear crystal and all basic colours, with an embossed gold or platinum decoration (Amazons or floral motif). Photo colour: alexandrite.

ETERNITY

DESIGN: 1920-1935

The colourful Eternity vases offer countless combinations with your favourite flowers. Aside from opulent tied bouquets, you can also create unusual petite creations in carefully matched colours or surprising contrasts.

The Eternity vase is available in several sizes and a wide range of Moser colours. The golden or platinum decoration lends a particularly luxurious appearance to the vases.



Vase, cat. no. 600, width (upper rim) × height: 6.7 × 11.5 cm, 8.8 × 15 cm, 11.6 × 20 cm, 14.7 × 25.5 cm, 17.6 × 30 cm / 2.6 × 4.5 in, 3.5 × 6 in, 4.6 × 8 in, 5.8 × 10 in, 6.9 × 12 in. The vase is available in clear crystal and all basic colours, with an embossed gold or platinum decoration (Amazons or floral motif), or with engraved motifs. Photo colours (from the left): beryl, alexandrite, topaz and eldor.



CLEOPATRA

DESIGN: 1920-1935



This majestic vase seated in a square base is hand-cut to eight facets. It is popular both in clear crystal and in colours accompanied by masterfully engraved motifs or decorated by an oroplastic strip of 24-carat gold or platinum. Their first versions emerged before 1920 thanks to Leo Moser.

Vase, cat. no. 624, width (upper rim) x height: 5.4 x 11.5 cm, 10 x 20 cm, 12.7 x 26 cm, 15 x 30 cm, 18.9 x 40 cm / 2.1 x 4.5 in, 3.9 x 8 in, 5 x 10.4 in, 5.9 x 12.4 in, 7.4 x 15.7 in. The vase is available in clear crystal and all basic colours, with an embossed gold or platinum decoration (Amazons or floral motif), or with engraved motifs.

DIVA

DESIGN: 1920-1935

Thanks to several different sizes and décors, the minimalist design of the vase cut to eight facets combines beautifully into diverse collections that look both ceremonial and optimistic.

That is not to mention the plethora of coloured variants. Truly astonishing!

Vase, cat. no. 592, width (upper rim) x height: 4.9 x 11.5 cm, 8.2 x 19.8 cm, 14 x 29.7 cm, 17.4 x 35 cm / 1.9 x 4.5 in, 3.2 x 7.8 in, 5.5 x 11.7 in, 6.9 x 13.8 in. The vase is available in clear crystal and all basic colours, with an embossed gold or platinum decoration (Amazons or floral motif), or with engraved motifs.

PURITY

DESIGN: 1920-1935



Vase, cat. no. 626, width (upper rim) × height: 7 × 11.5 cm, 14.4 × 22.5 cm, 17.5 × 28 cm, 22 × 35 cm / 2.8 × 4.5 in, 5.7 × 8.9 in, 6.9 × 10.9 in, 8.7 × 13.8 in. The vase is available in clear crystal and all basic and underlaid colours, with an embossed gold or platinum decoration (Amazons or floral motif), or with engraved motifs. Colours: aquamarine underlaid with amethyst, topaz underlaid with rose, alexandrite underlaid with green and alexandrite underlaid with aurora (from the left).

The difficult technique of underlaying gives Purity vases a wholly new look brimming with emotion. They can thus become an original and striking addition to any modern interior. They find their best friend in light, which reveals combinations of various pastel shades in a single piece of crystal.

Particularly impressive among the many variants are alexandrite underlaid with green, aquamarine with rose or alexandrite with aurora. You can complement them with an apt choice of flowers, but they are similarly impressive as solitary art pieces with astounding light effects.



GLOBE

DESIGN: 1920-1935

Globe is built on a basic spherical shape cut to ten facets. Its look in the unique Moser colours can be punctuated even more by a gold or platinum décor.

It can also reveal its magic with masterful engravings decorating its surface, such as a coral fish motif from the Water World collection.

Vase, cat. no. 2346, width (upper rim) × height: 20 × 19.2 cm, 28.1 × 27 cm / 7.8 × 7.6 in, 11 × 10.7 in. The vase is available in clear crystal and all basic colours, with an embossed gold or platinum decoration (Amazons or floral motif), or with engraved motifs.



GLORIA

DESIGN: 1920-1935

This prestige vase is characterised by a clean neoclassical silhouette and a precise cut to twelve facets. Particularly impressive are its variants with an oroplastic motif of Amazons, which further highlights the inspiration by antiquity.

The wide upper edge will welcome your flower arrangements with open arms. Thanks to a broad palette of colours and décors, the set can adorn any interior.

Vase, cat. no. 628, width (upper rim) x height: 9.3 x 11.5 cm, 12.2 x 15 cm, 15.5 x 20.5 cm, 19.7 x 25.5 cm, 23.8 x 30.5 cm, 27.6 x 35 cm / 3.7 x 4.5 in, 4.8 x 6 in, 6.1 x 8 in, 7.8 x 9.9 in, 9.4 x 12 in, 10.9 x 13.8 in. The vase is available in clear crystal and all basic and underlaid colours, with an embossed gold or platinum decoration (Amazons or floral motif), or with engraved motifs. Photo colours: clear crystal underlaid with amethyst, clear crystal underlaid with reseda, clear crystal underlaid with aurora and clear crystal underlaid with rose (from the left).



LIRIO

DESIGN: 2017

The geometrically cut vase creates the illusion of a sunlit water surface and a dive into the world underneath.

The colour gradation of aquamarine with reseda was inspired by the light contrast between the shallows and depths of the ocean. The precise cut into facets gives the object dynamic optics that resemble the glimmer of sunlight on a wavy sea.

Vase, cat. no. 3201, width (upper rim) x height: 14.5 x 33 cm / 5.7 x 13 in. Colour: aquamarine underlaid with green.

REFRESH COLLECTION

DESIGN: 2021

A MODERN LOOK AT A MOSER CLASSIC

The Refresh set gave traditional Moser vases a modern edge. Time-tested shapes gained an elongated silhouette and a refreshing colour scheme by the addition of robust pedestals. Refresh thus merges the old and the new into unexpected combinations.

On selected models, the classical cut is complemented by engraved animal motifs symbolising parental love. Thanks to their diversity, the vases are suited for both modern and formal interiors.



Vase, cat. no. 3455, width (upper rim) x height: 12.9 x 25.4 cm / 5.1 x 10 in. Colour: ocean green underlaid with blue, base: aquamarine, motif: Turtles (photo above). 30-piece limited edition.



Vase, cat. no. 3457, width (upper rim) x height: 19 x 33.5 cm / 7.5 x 13.2 in. Colour: eldor underlaid with green, base: ocean green. Vase, cat. no. 3454, width (upper rim) x height: 17 x 36 cm / 6.7 x 14.2 in. Colour: aquamarine underlaid with rose, base: alexandrite. Vase, cat. no. 3458, width (upper rim) x height: 17 x 26.8 cm / 6.7 x 10.6 in. Colour: alexandrite underlaid with green, base: beryl, motif: Koalas (see photo, from the left). The set also includes other shapes in various colour combinations and with other engraved motifs.



AURA

DESIGN: 1970

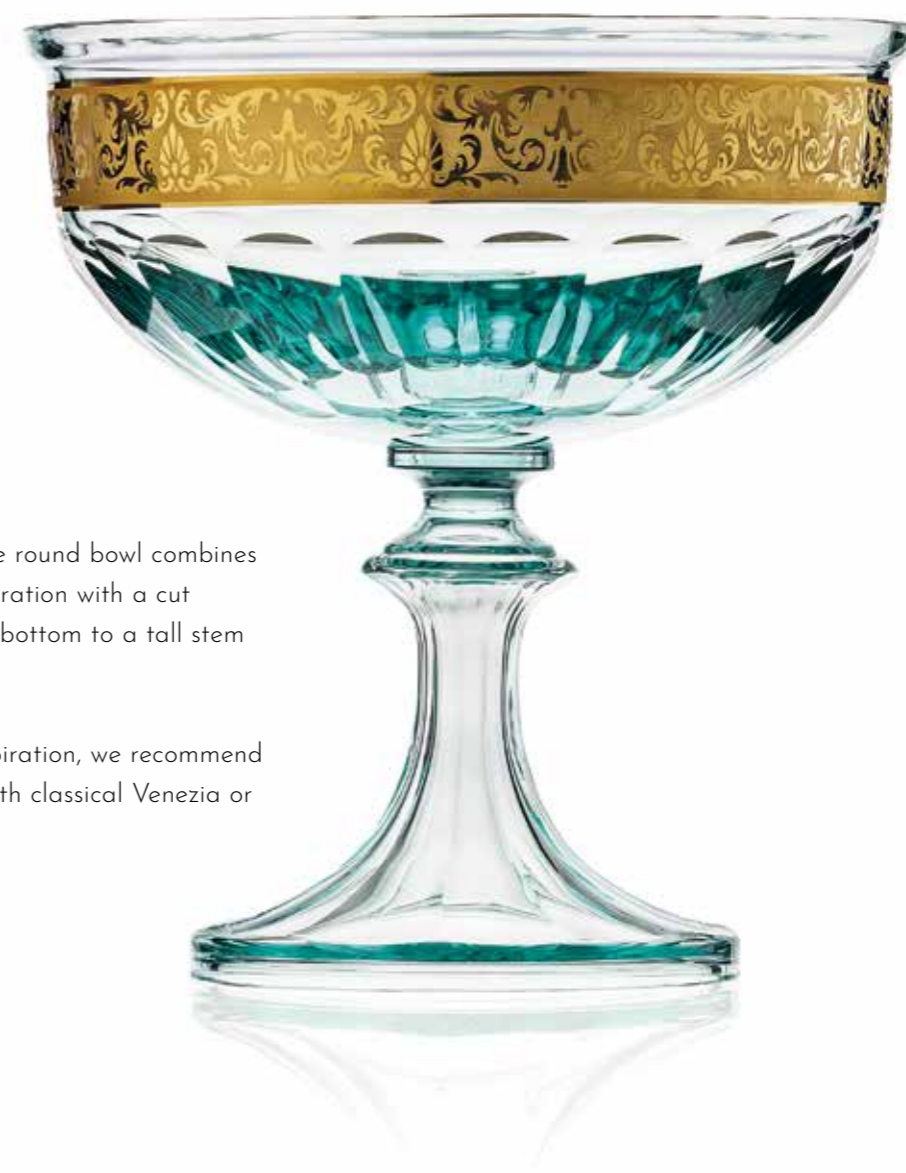
Hand-cut ikebana vases are perfect for arranging flowers in Japanese style. They fit into both traditional and modern interiors.

You can also choose from coloured variants to suit your taste.

Vase, cat. no. 2346/1, width (upper rim) x height: 9.7 x 15 cm, 15 x 20 cm, 27.2 x 28 cm / 3.8 x 5.9 in, 5.9 x 7.9 in, 10.7 x 11 in. The vase is available in clear crystal and all basic colours, with an embossed gold or platinum decoration (Amazons or floral motif), or with engraved motifs.

NAPLES

DESIGN: 1921-1925



This highly presentable round bowl combines a wide oroplastic decoration with a cut that transitions at the bottom to a tall stem with a wide base.

For fans of Italian inspiration, we recommend combining the bowl with classical Venezia or Merano vases.

Bowl, cat. no. 3200, width (upper rim) x height: 30 x 31 cm / 11.8 x 12.2 in. The bowl is available in clear crystal and all basic colours, with an embossed gold or platinum decoration (Amazons or floral motif). The photo features a bowl in beryl.

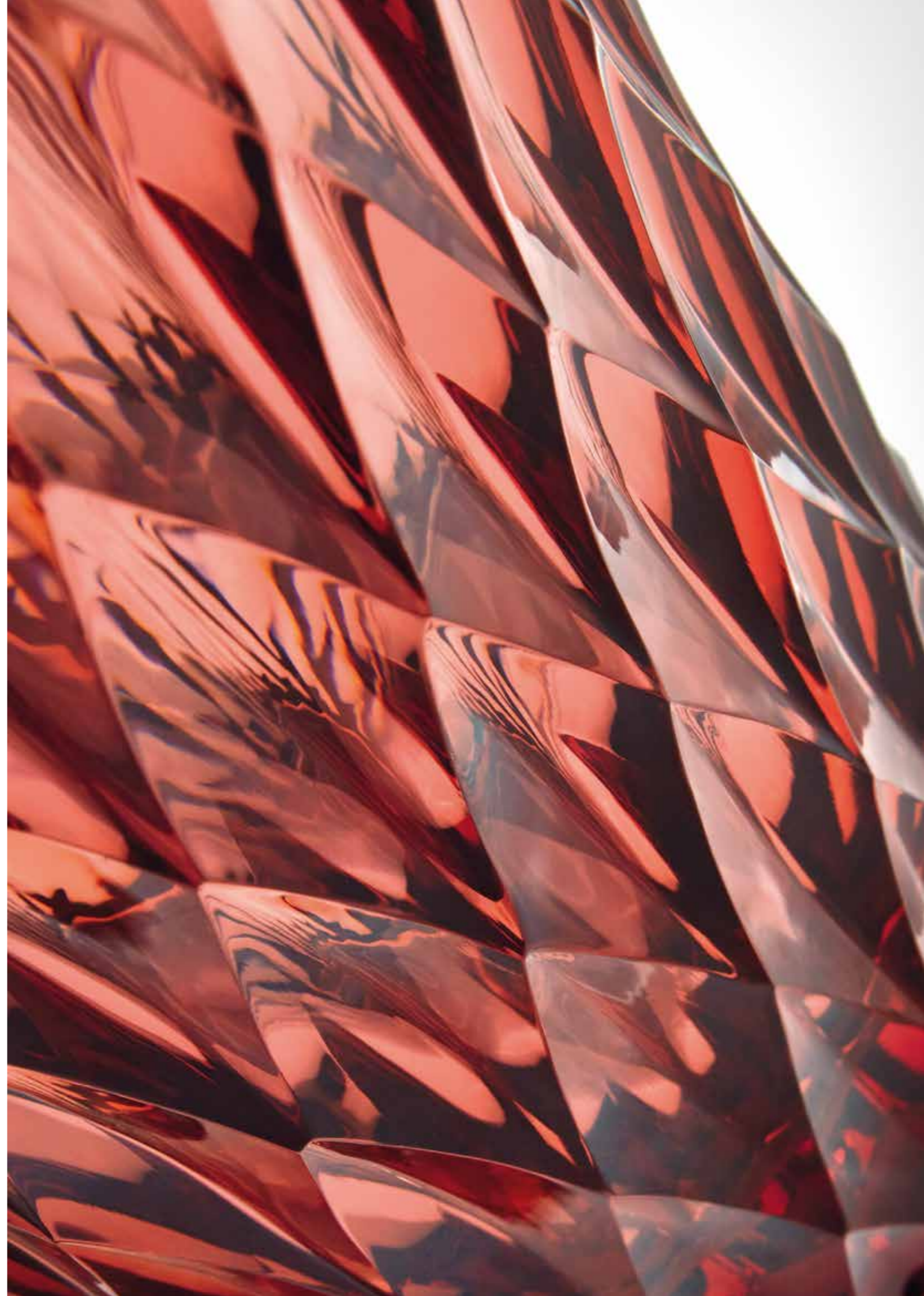
WERSIN

DESIGN: 1940 / WOLFGANG VON WERSIN



FEW WOULD GUESS THAT THE WERSIN VASE HAS CELEBRATED ITS 80TH BIRTHDAY. THE CLEVER DESIGN AND MASTERFUL GEOMETRIC CUT MAKE IT A TIMELESS JEWEL.

Between 1939 and 1941, their author designed a set of vases where he employed standard facet cutting and experimented with various more complex types of flat-glass and hollow-glass cuts, such as wedge cuts, hexagonal facets, large rhombic pebbles or spiral grooves. In 1940, Wersin's works for Moser won the Grand Premio award at the Milan Triennial VII.



MERANO

DESIGN: 1907



Each of these classicist vases is beautiful in its own right, but their beauty shines even more when in a pair. Though the shapes come from sketches dated around 1907, they will become the pride of every modern interior.

They also perfectly combine with the Naples bowl, which is similarly decorated by an gilded ornamental strip featuring an acanthine leaf motif.

Vase, cat. no. 3225, width (upper rim) x height: 18 x 45 cm / 7 x 17.7 in. Vase, cat. no. 3206, width (upper rim) x height: 17 x 35 cm / 6.7 x 13.8 in. The vases are available in clear crystal, with an embossed gold decoration (floral motif).



The appearance of the majority of classic vases made of clear crystal is crowned by a luxurious gold or platinum decoration. However, some look better when showcased in the austere elegance of their basic shape, which highlights the mastery of Karlsbad glass cutters.

One such example is the vase bearing the name Louvre. Similarly to the Merano set, their classicist design originates from a sketchbook from the early 20th century.

LOUVRE

DESIGN: 1921-1925

Vase, cat. no. 3225, width (upper rim) x height: 18 x 45 cm / 7 x 17.7 in. Vase, cat. no. 3225, width (upper rim) x height: 18 x 45 cm / 7 x 17.7 in. The vase can be complemented by the second one, smaller and wider. Cat. no. 3206, width (upper rim) x height: 17 x 35 cm / 6.7 x 13.8 in. The vases are available in clear crystal and all basic colours.

MAGIC BOX

DESIGN: 1920-1935

This hand-cut jar with a double oroplastic decoration on the body and the lid shall become a luxurious addition to your table even when serving only an aperitif, digestif or coffee. It will also provide the perfect shelter for sweets or any other treasures.



Jar, cat. no. 544, width (upper rim) x height without lid: 22.5 x 10.5 cm and 18.4 x 9 cm / 8.5 x 4.1 in and 7.2 x 3.5 in. The jar is available in clear crystal and all basic colours, with an embossed gold or platinum decoration (Amazons or floral motif). Photo colours: eldor (top), beryl, alexandrite (from the left).



TUTTI-FRUTTI

DESIGN: 1920-1935

The modern name belongs to a very classical, open shape with a circular base that connects via a wide stem. Whether in clear crystal or the unique Moser colours, whether complemented by a gold or platinum decoration, the bowl will become an embellishment in any space.

Bowl, cat. no. 555, width (upper rim) x height: 25.5 x 12.9 cm / 10 x 5.1 in. The bowl is available in clear crystal and all basic colours, with an embossed gold or platinum decoration (Amazons or floral motif). Photo colour: alexandrite.

MIRTH

DESIGN: 1926 / LEO MOSER

The moderate stemmed bowl catches the eye through its sophisticated shape divided into three clearly delimited sections.

It will stand out in particular when combined with grapes, currant or other small berries that go nicely with the generous gold or platinum decoration on the rim.

Bowl, cat. no. 5529, size: 14 x 15.1 cm / 5.6 x 5.9 in. The bowl is available in clear crystal and all basic colours, with an embossed gold or platinum decoration (Amazons or floral motif).



LADY HAMILTON

DESIGN: 1934

The noble and elegant shape of the bowl, richly decorated with gold or platinum, makes a particular impression on festive tables but will bring lustre and light even to modest banquets or work meetings.

The classical design and masterful rendition stand out even more when combined with a drinking collection of the same name.

Bowl, cat. no. 15015/O/M, width (upper rim) x height: 34.5 x 21.5 cm / 12.6 x 8.5 in. The bowl is available in clear crystal and all basic colours, with an embossed gold or platinum decoration (Amazons or floral motif).

SPLENDID

DESIGN: 1911



THIS MAJESTIC CUT AND RICHLY GOLD-DECORATED VASE SUPPLEMENTS THE MOST FAMOUS AND EXTENSIVE DRINKING SET OF MOSER GLASSWORKS.

Since its creation in 1911, the set has appeared on the ceremonial tables of many royal families and other prominent personalities. Just like each glass or decanter from the Splendid collection, the bowl is the work of dozens of pairs of hands of all glassmaking professions.



Bowl, cat. no. 910/10160/OP, width (upper rim) x height: 23 x 13.3 cm, 32 x 20.8 cm, 36 x 20.8 cm / 9.1 x 5.2 in, 12.6 x 8.2 in, 14.1 x 8.2 in. The bowl is available in clear crystal with an embossed gold (OP) or platinum decoration (OP pt.), in round or oval design.

SEDUCTIVE ART NOUVEAU

MOSER ART NOUVEAU VASES WITH FLORAL MOTIFS ARE A BEAUTIFUL SHOWCASE OF THE ARTISTRY OF KARLSBAD GLASSMAKERS, CUTTERS AND ENGRAVERS.



These men and women have been perfecting their masterful technique since the turn of the 20th century, when Art Nouveau brought a fresh wind to the sails of all branches of art.

The entire collection of Art Nouveau objects is characterised by smooth transitions of floral motifs from one wall to the next. Deep cuts permeate the edges and gradually envelop the entire shell.



SEÑORITA
IRIS ENGR.

clear crystal underlaid
with green
9.2 x 34.8 cm
3.6 x 13.7 in
6663



BLOSSOM
BLOSSOM ENGR.

clear crystal underlaid
with blue
11.3 x 26 cm
4.4 x 10.2 in
2794



IRISES
IRISES ENGR.

clear crystal underlaid
with rose
9 x 30 cm
3.5 x 11.8 in
3373
limited edition / 100 pcs



PYLON
ROSES ENGR.

clear crystal underlaid
with amethyst
10.6 x 40 cm
4.2 x 15.7 in
2748



ROSES
ROSES ENGR.

clear crystal underlaid
with rose
4.6 x 20 cm
1.8 x 7.9 in
8127



LIRIO
IRIS ENGR.

clear crystal underlaid
with blue
6.5 x 20 cm
2.6 x 7.9 in
3201



LARA
IRIS ENGR.

beryl
5.7 x 26 cm
2.2 x 10.2 in
1733/B



GODDESS
ROSES ENGR.

clear crystal underlaid
with reseda
14.2 x 33.2 cm
5.6 x 13.1 in
2698



ROSES
ROSES ENGR.

clear crystal underlaid
with green
360 ml / 13.7 x 17.5 cm
12 oz / 5.4 x 6.9 in
6301/I



NARCISSUS
NARCISSUS ENGR.

clear crystal underlaid
with rose
14.5 x 10 cm
5.7 x 3.9 in
3372
limited edition / 100 pcs



CALLA
IRIS AND LILY ENGR.

clear crystal underlaid
with amethyst
16 x 25 cm
6.3 x 9.8 in
2777



CHRYSIS
ROSES ENGR.

clear crystal underlaid
with aurora
16 x 18 cm
6.3 x 7.1 in
2776

DISCOVER THE MAGICAL WORLD UNDERNEATH THE CRYSTAL SURFACE

THE UNIQUE COMPOSITION OF PURE LEAD-FREE CRYSTAL IN COMBINATION WITH UNIQUE MOSER COLOURS AND, ABOVE ALL, THE MASTERY OF KARLSBAD GLASSBLOWERS, CUTTERS AND ENGRAVERS, IS THE FOUNDATION OF THIS SET OF DECORATIVE OBJECTS INSPIRED BY THE UNDERSEA WORLD, FRESH WATER LIFE OR MYTHICAL BEASTS.



The magic of individual motifs stands out in part thanks to the beautiful shades of aquamarine, beryl or ocean green crystal and their underlaid variants.

The perfectly crafted engravings evoke the atmosphere of sea shallows, coral reefs and azure lagoons.

Globe, Coral Fish engr., cat. no. 2346, width (upper rim) x height: 28.1 x 27.3 cm / 11 x 10.7 in. Photo colour: aquamarine.





CALYPSO
OCEAN
KINGDOM II ENGR.

alexandrite underlaid with
aurora, alexandrite
18.9 x 32 cm
7.4 x 12.6 in
3284
limited edition / 100 pcs



GRAND CALYPSO
REEF KINGDOM ENGR.

aquamarine underlaid with
green, aquamarine
21 x 41 cm
8.3 x 16.1 in
2346
limited edition / 30 pcs



BERNADETTE
OCTOPUS ENGR.

aquamarine underlaid with green
20 x 30.5 cm
7.9 x 12 in
3314
limited edition / 50 pcs



EDEN
DRAGON AND FISH ENGR.

clear crystal underlaid
with blue
24.1 x 35 cm
9.5 x 13.8 in
529



LIRIO
LAKE WORLD ENGR.

aquamarine underlaid
with green
14.5 x 33 cm
5.7 x 13 in
3201
limited edition / 100 pcs



GLORIOLA
LITTLE FISH ENGR.

aquamarine underlaid
with green
17.5 x 35 cm
6.9 x 13.8 in
3220
limited edition / 50 pcs



CHIA TE
EMPIRE OF OCEAN ENGR.

aquamarine underlaid
with green
13.8 x 22.5 cm
5.4 x 8.9 in
3417/POS pt.
limited edition / 30 pcs



CHIA TE
EMPIRE OF OCEAN ENGR.

aquamarine underlaid
with green
11 x 28 cm
4.3 x 11 in
3417/POS pt.
limited edition / 30 pcs



CHIA TE
EMPIRE OF OCEAN ENGR.

aquamarine underlaid
with green
22 x 15 cm
8.7 x 5.9 in
3419/POS pt.
limited edition / 30 pcs



MARINA
CORAL FISH ENGR.

aquamarine
19.7 x 24 cm
7.7 x 9.4 in
2268



DESIRE
FISH ENGR.

beryl
29.4 x 11.3 cm
11.6 x 4.4 in
2642

ELEGANCE IN MOTION

THE ENGRAVER SPENDS LONG WEEKS ON EVERY MOTIF. BUT TIME IS NOT RELEVANT HERE: WHAT MATTERS IS THE RESULT AND ITS PERFECTION. THE MASTERY OF OUR ENGRAVERS BRINGS TO LIFE CRYSTAL IMAGES FULL OF MOVEMENT, ENERGY AND EMOTION. THE PRECISION OF THE EXECUTION IS ASTOUNDING.



Popular engravings include scenes from safari, hunting motifs or portraits of beasts of prey. However, the true king of the beasts from the perspective of the artist is not the lion but the horse. The elegance of its movements and the photogenic nature of its figure make it a frequent theme in the repertoire of Moser engravers as well.

Euphoria, Phoenix engr., cat. no. 3321/POS (gold decoration), width (upper rim) x height: 10.5 x 25 cm / 4.1 x 9.8 in.
Photo colour: alexandrite underlaid with blue. Limited edition / 100 pcs.





AMALFI
PEACOCK ENGR. (PROFILE)

alexandrite underlaid with green
12.7 x 40 cm
5 x 15.7 in
3224
limited edition / 50 pcs



AMALFI
PEACOCK ENGR. (PROFILE)

alexandrite underlaid with green
10.5 x 33 cm
4.1 x 13 in
3224
limited edition / 100 pcs



EUPHORIA
PHOENIX ENGR.

alexandrite underlaid with rose
10.5 x 25 cm
4.1 x 9.8 in
3321/POS
limited edition: 100 pcs



ALLEGRIA
BIRDS-OF-PARADISE ENGR.

beryl underlaid with aurora
11 x 30 cm
4.3 x 11.8 in
3221/PO+POS
limited edition / 50 pcs



MODENA
HORSES IN THE WAVES ENGR.

aquamarine
12 x 25 cm
4.7 x 9.8 in
3223
limited edition / 50 pcs



PURITY
HORSE ENGR.

topaz
17.5 x 27.8 cm
6.9 x 10.9 in
626



PURITY
HORSE ENGR.

beryl
17.5 x 27.8 cm
6.9 x 10.9 in
626



PURITY
PRANCING HORSE ENGR.

clear crystal
17.5 x 27.8 cm
6.9 x 10.9 in
626

Width (upper rim) x height (cm). PO (thin gold rim), POS (wide gold border).

CRYSTAL COMES ALIVE

IN MOSER GLASSWORKS, THE CRAFT OF ENGRAVING IS PASSED ON FROM GENERATION TO GENERATION SINCE THE DAYS OF ITS FOUNDER, LUDWIG MOSER.



The perfection and precision with which Moser engravers depict individual motifs draw the attention of customers from all over the world.

Various motifs from the animal kingdom are no exception, astounding with their beauty and faithful rendition of movement and expression.





NATALY
LEOPARDS ENGR.

clear crystal layered
with eldor
21 x 27 cm
8.3 x 10.6 in
3138
limited edition / 30 pcs



NATALY
ROARING LION ENGR.

clear crystal layered
with topaz
21 x 27 cm
8.3 x 10.6 in
3138
limited edition / 30 pcs



NATALY
LIONS ENGR.

clear crystal layered
with topaz
21 x 27 cm
8.3 x 10.6 in
3138
limited edition / 30 pcs



NATALY
POLAR BEARS ENGR.

clear crystal layered
with aquamarine
21 x 27 cm
8.3 x 10.6 in
3138
limited edition / 30 pcs



NATALY
ELEPHANTS ENGR.

clear crystal layered with
alexandrite
21 x 27 cm
8.3 x 10.6 in
3138
limited edition / 30 pcs



MURIEL
OWL ENGR.

topaz layered with aurora
19 x 24 cm
7.5 x 9.4 in
57663
limited edition / 6 pcs



NIKITA
RHINOS ENGR.

beryl layered with smoke
27.5 x 22 cm
10.8 x 8.7 in
3312
limited edition / 15 pcs



NIKITA
ELEPHANTS ENGR.

beryl layered with smoke, smoke
27.5 x 25 cm
10.8 x 9.8 in
3312
limited edition / 30 pcs



NIKITA
BUFFALO ENGR.

beryl layered with smoke
27.5 x 20.5 cm
10.8 x 8.1 in
3312
limited edition / 15 pcs



NIKITA
PANDA ENGR.

beryl layered with smoke
27.5 x 22 cm
10.8 x 8.7 in
3312
limited edition / 15 pcs



NIKITA
HORSES ENGR.

topaz layered with smoke,
smoke
27.5 x 22 cm
10.8 x 8.7 in
3312
limited edition / 20 pcs



NICOLE
TIGER HEAD ENGR.

topaz layered with smoke
27 x 30 cm
10.6 x 11.8 in
3294
limited edition / 30 pcs

MASTERPIECES

DECORATIVE ARTWORKS

WHETHER THEY BE CONTEMPORARY DESIGNS OR OBJECTS BASED ON HUNDRED-YEAR-OLD MODELS, THEY HAVE ONE THING IN COMMON. THEY ARE STRIKING WORKS OF ART. THE MOST EXPERIENCED MASTERS OF THE GLASSMAKING CRAFT EMPLOY THEIR SKILLS OVER THE COURSE OF WEEKS AND MONTHS TO CREATE AN EXTRAORDINARY PIECE.

Thanks to their uniqueness, objects and sets from the Masterpieces series enjoy undying interest among collectors and lovers of Czech crystal. These are often unique pieces or limited editions. It is thus no surprise that their value grows over time. The value of Moser artworks can reach six figures, making them an interesting investment opportunity.

INCLUDE MOSER IN YOUR COLLECTION

Spectacularly detailed crystal paintings and reliefs are most commonly created based on originals made by the world's most famous artists. The repertoire of Karlsbad engravers spans from baroque chiaroscuro to more relaxed Renaissance and classicism to Art Nouveau and dynamic modernism.

Your collection can thus include crystal versions of paintings by Leonardo da Vinci, Botticelli, Caravaggio, Modigliani or Salvador Dalí. A major portion of the assortment also consists of biblical motifs inspired by works of art such as *The Last Supper* or *Four Horsemen of the Apocalypse*.

EACH MOTIF IS THE RESULT OF WEEKS OR EVEN MONTHS OF PATIENT AND PRECISE WORK WHERE THE MASTER CANNOT AFFORD TO MAKE BUT A SINGLE MISTAKE. THAT REQUIRES NOT ONLY ARTISTIC TALENT AND LOVE OF THE GLASSMAKING CRAFT BUT ALSO PASSION AND DETERMINATION TO ACHIEVE SOMETHING NO-ONE ELSE CAN. BECAUSE OF THAT, MOSER ENGRAVERS ARE CONSIDERED THE BEST IN THEIR FIELD ALL OVER THE WORLD.



FLAMING JUNE

DESIGN: 2017 / 20-PIECE LIMITED EDITION



The motif based on the famous painting by Frederic Leighton, the original of which is on display in Museo de Arte de Ponce in Puerto Rico, was inspired by sleeping nymphs from Greek mythological sculptures.

Master Tomáš Lesser perfectly captured the atmosphere of the moment, the very essence of beauty.

Sabrina / Flaming June engr., cat. no. 3375, width (upper edge) × height: 20.3 × 27.5 cm / 7.9 × 10.8 in.
Colour: topaz layered with aurora, clear crystal, rosalin.

LADY WITH AN ERMINE

DESIGN: 2017 / 25-PIECE LIMITED EDITION



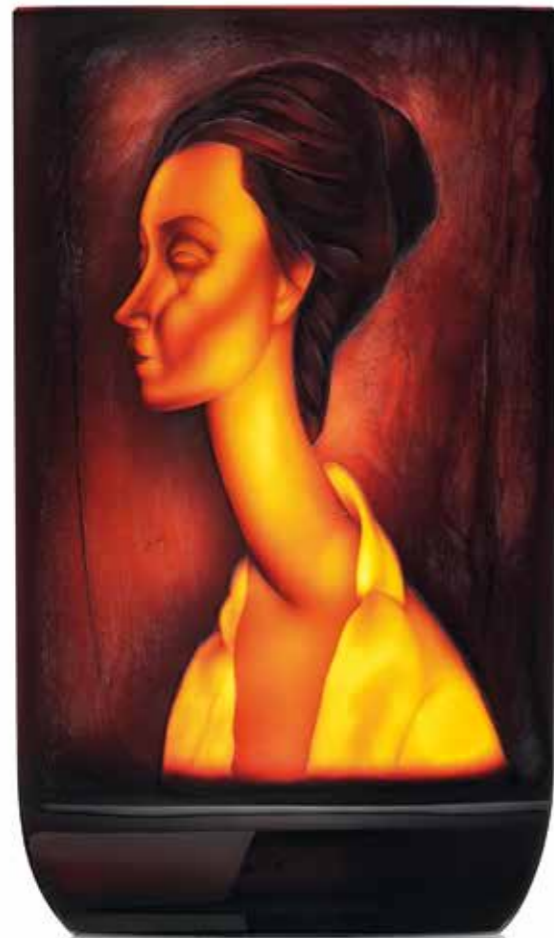
The original of one of four surviving portraits of women attributed to Leonardo da Vinci can be admired by visitors of the National Museum in Kraków, Poland.

Its crystal version created by master Vlastimil Selinger will transform your flat into a gallery. By gradually engraving away dark blue crystal, the engraver achieved the precise chiaroscuro and character of the painted original.

Muriel / Lady with an Ermine engr., cat. no. 3367, width (upper edge) × height: 18.8 × 31 cm / 7.4 × 12.2 in.
Colour: topaz layered with dark blue, eldor.

PORTRAIT OF LUNIA CZECHOWSKA

DESIGN: 2018 / 6-PIECE LIMITED EDITION



"When I know your soul, I will paint your eyes," said Amedeo Modigliani to his models. It would seem that the soul of Lunia Czechowska, a friend of Amadeo's art dealer, Leopold Zborowski, remained a mystery to the artist.

Vlastimil Selinger's engraving masterfully captures the typical look of Modigliani's paintings, whether it be the empty gaze turning attention inward or the elongated neck. The unique engraving from a limited edition numbering only six pieces will enrich your collection of modern art.

Alethea / Portrait of Lunia Czechowska, cat. no. 57944, width (upper edge) x height: 18.5 x 31 cm / 7.1 x 12.2 in.
Colour: topaz layered with aurora.

BIRTH OF VENUS

DESIGN: 2016 / 20-PIECE LIMITED EDITION



Though Botticelli's most famous painting, the Birth of Venus, cannot leave the Florentine Uffizi Gallery, its crystal versions are not similarly confined to Karlsbad.

Andy Warhol, Robert Rauschenberg or photographer David LaChapell, who have all paraphrased the theme in their works, were also joined by Moser engraver Vladimír Skála.

Euphoria / Birth of Venus engr., 3311/POS (wide gilded border), width (upper edge) x height: 12 x 45 cm / 4.7 x 17.7 in.
Colour: beryl underlaid with rose, beryl.

THE THREE GRACES

DESIGN: 2016

BOTTICELLI'S FAMOUS PAINTING, PRIMAVERA, FROM THE UFFIZI GALLERY IN FLORENCE IS PAINTED IN TEMPERA PAINT ON WOOD. ITS MAIN MOTIF WAS CARRIED OVER ONTO CRYSTAL BY MASTER VLASTIMIL SELINGER.

Venus' companions dance in the garden of the goddess of love like nymphs. This scene gains a special kind of charm when rendered in lipid crystal. And you do not have to travel to Tuscany to see it.



Victoria / The Three Graces engr., cat. no. 2593/1, width (upper edge) x height: 15.7 x 25.5 cm / 6.2 x 10 in. Colour: clear crystal.

MOSER ORIGINAL

Inlaid crystal has been among the pinnacles of Moser production since the Art Nouveau period. The technologically demanding combination of an engraved floral motif across the entire surface of the piece and fused three-dimensional decoration in the shape of colourful blossoms is a technique trademarked by Moser glassworks. Works of art created using this technique were met with an enthusiastic response at the 1906 Milan International Exhibition.



AZALEA

clear crystal underlaid
with reseda, rose
18 x 9.5 cm
7.1 x 3.7 in
3291



CROWN

clear crystal underlaid
with reseda, rose
27 x 12.5 cm
10.6 x 4.9 in
3157
limited edition / 100 pcs



ROSES

clear crystal underlaid
with rose, rose
8.5 x 35 cm
3.3 x 13.8 in
8127
limited edition / 155 pcs



PANSY

clear crystal underlaid
with amethyst, blue
12.2 x 11.8 cm
4.8 x 4.6 in
8694
limited edition / 150 pcs



POPPY

clear crystal underlaid
with aurora, rose
10 x 35.7 cm
3.9 x 14.1 in
8221
limited edition / 150 pcs



LILIANA

clear crystal underlaid
with reseda, aurora
11 x 25 cm
4.3 x 9.8 in
3377



COUNTRESS

DESIGN: 2021 / MOSER STUDIO

CRYSTAL JEWELS BASED ON ALPHONSE MUCHA

More than 160 years ago, Alphonse Mucha was born - a phenomenal artist who was not afraid to walk his own path, which earned him the admiration of the whole world. His genius has now entered a set of classically shaped vases called the Countess.

Each of them is decorated by an engraving inspired by Mucha's lithographs with novel colour schemes. The selection of vases of different sizes and designs will delight not only passionate collectors of Mucha's art but also all fans of Art Nouveau motifs.



Vase, cat. no. 3460, width (upper rim) x height: 16.4 x 50 cm / 6.5 x 19.7 in. Colour: clear crystal overlaid with green and with yellow enamel, motif: Lady with Carnations (photo on the left). Limited edition: 15 pcs. Vase, cat. no. 3460, width (upper rim) x height: 12.3 x 38 cm / 4.8 x 15 in. Colour: clear crystal overlaid with green and with yellow enamel, motif: Carnations. Limited edition: 30 pcs (photo on the left, 2nd from the left). Vase, cat. no. 3460, width (upper rim) x height: 16.4 x 50 cm / 6.5 x 19.7 in. Colour: clear crystal overlaid with blue and with orange enamel, motif: Lady with Roses. Limited edition: 15 pcs (photo above). The set includes other motifs and colour combinations as well.

PORTA

DESIGN: 2020 / MOSER STUDIO

Magnolia, strelitzia and sakura have become an inspiration for the masterful engraving and the colour scheme of these monumental vases. Choose which one will best stand out in your interior.



OBJECT
STRELITZIA ENGR.

clear crystal layered with topaz, topaz overlaid with blue, topaz layered with dark blue, topaz, dark blue / 24K gold
15.1 x 70 cm
5.9 x 27.6 in
3427



OBJECT
SAKURA ENGR.

ocean green, rosalin underlaid with green, clear crystal layered with rosalin, ocean green, rosalin / 24K gold
15.1 x 70 cm
5.9 x 27.6 in
3427



OBJECT
MAGNOLIA ENGR.

alexandrite, alexandrite underlaid with rose, alexandrite, alexandrite / 24K gold
15.1 x 70 cm
5.9 x 27.6 in
3427



CRYSTAL EXOTICA

Animor is the name of a whole set of decorative objects, primarily vases, designed by architect and designer Rudolf Wels in the 1920s. In the spirit of Art Deco aesthetics, it combines coloured crystal with sandblasted, engraved and richly gilded animal motifs.

The whole series originally consisted of nearly two dozen vases, bowls and jars of various shapes and sizes. Our selection includes only the most attractive shapes and motifs from among these.



TANGANYIKA BOWL

sandblasted and gilded with 24K gold
Herons / smoke
24 x 12.4 cm
9.4 x 4.9 in
3360
limited edition / 100 pcs



TANGANYIKA VASE

sandblasted and gilded with 24K gold
Herons / smoke
8 x 26.5 cm
3.1 x 10.4 in
3359
limited edition / 100 pcs



BURUNDI

sandblasted, engraved and gilded with 24K gold
Elephants / dark blue
7.4 x 30 cm
2.9 x 11.8 in
3362
limited edition / 100 pcs



SAVANNAH

sandblasted, engraved and gilded with 24K gold
Giraffes / aquamarine
19.5 x 32 cm
7.7 x 12.6 in
3363
limited edition / 100 pcs



SERENGETI

sandblasted, engraved and gilded with 24K gold
Elephants / topaz
13.5 x 27 cm
5.3 x 10.6 in
3361
limited edition / 100 pcs

Width (upper rim) x height (cm).

**VASE**

hand painting and gilding with 24K gold
topaz
20.5 x 94 cm
8.1 x 37 in
3286
limited edition / 20 pcs

**VASE**

gilding with 24K gold
topaz
20.5 x 94 cm
8.1 x 37 in
3286/POS
limited edition / 50 pcs

CHRISTINE

DESIGN: 1880 / LIMITED EDITIONS

Christine vases draw attention at first sight by their height and graceful classicist shape. The basic version is decorated by a difficult facet cut and hand-painted gold rings polished by agate brushes. It can also come richly decorated with floral ornaments painted with colourful enamels and gold.

Width (upper rim) x height (cm). POS - gilded rim.

ELISABETH

DESIGN: 2014 / 50-PIECE LIMITED EDITION



This tall vase in topaz colour is characterised by a facet cut and strips of gold ornaments that elegantly terminate each individual segment.

"The technique of embossed gilded ornaments is unique in allowing the transfer of movement and elegance of the brush in a single moment and with only a single stroke. I would compare it to calligraphy, meditation on glass," says the author of the painting, Jan Janecký.

Vase, cat. no. 3257, width (upper rim) x height: 28.3 x 77.5 cm / 11.1 x 30.4 in. The vase is available in topaz colour.



MINUET

DESIGN: 1885 / 20-PIECE LIMITED EDITION

Aside from floral ornaments rendered in coloured enamels and gold, this monumental two-piece vase prides itself with a hand-painted scene of a pair of lovers in Renaissance clothing.

The shell of the vase is decorated with painted sprigs with oak leaves and fused relief acorns. The vase is an accurate replica of an original from 1885, which is on display in the Glass Museum in Passau, Germany.

Vase, cat. no. 3184, width (upper rim) x height: 13 x 68.3 cm / 5.1 x 26.9 in.
Hand painting, gilding with 24K gold, fused acorns / colour: topaz.



SISSI

DESIGN: 1880 / 50-PIECE LIMITED EDITION

The historicist décor is painted in covering colours and gold and subsequently decorated with acorns.

Light blue colour lends the piece softness and elegance. The original from 1880 is on display in the Glass Museum in Passau, Germany.

Vase, cat. no. 3355, width (upper rim) x height: 10 x 40 cm / 3.9 x 15.7 in.
Hand painting, gilding with 24K gold, fused acorns / colour: clear crystal underlaid with light blue opal.

CONSTANCE

DESIGN: 1885 / 50-PIECE LIMITED EDITION



The historicist décor painted on rosalin with covering colours and gold is dominated by a three-dimensional depiction of an eagle. It is a historic design rendered using contemporary techniques. The original from 1885 is on display in the Glass Museum in Passau, Germany.

Vase, cat. no. 3354, width (upper rim) x height: 8.5 x 45 cm / 3.3 x 17.7 in.
Hand painting, gilding with 24K gold, fused acorns / colour: rosalin.

LAURA

DESIGN: 2018 / 10-PIECE LIMITED EDITION



The Ocean motif astonishes through the beautiful composition of the coral reef scene, which gains a high degree of three-dimensionality on the aquamarine shell of the vase.

The foundation consists of glass paint with turpentine and oil, joined by molten gold. "Crystal responds completely differently than canvas. You have to employ entirely different techniques, and yet it always finds a way to surprise me in some way," explains painter and pedagogue Jan Janecký.

Ocean II vase, cat. no. 3421, width (upper rim) x height: 15.8 x 39.5 cm / 6.2 x 15.6 in.
Hand painting, gilding with 24K gold / colour: aquamarine underlaid with rose.



GRACIA

DESIGN: 1885 / 50-PIECE LIMITED EDITION

— This elegant hand-painted and gilded vase is yet another masterpiece by painter Jan Janecký.

"I learn from old masters. I study their works and try to preserve the same techniques they used more than a century ago," he says about his passion. "Painting on crystal is quite literally alchemy. Each piece requires a different colour mix, brush technique and firing. The only way to achieve mastery is to spend hundreds of hours patiently working away."

Vase, cat. no. 3420, width (upper rim) × height: 10 × 45 cm / 3.9 × 17.7 in. Hand painting, gilding with 24K gold / colour: clear crystal, topaz.



LETICIA

DESIGN: 1880 / 100-PIECE LIMITED EDITION

— The vase made of dark violet crystal abounds with a detailed floral décor with prominent elements in the shape of stylised blossoms and heart-shaped leaves. Painted with gold and enamel paints based on an original model from 1880.

Vase, cat. no. 3356, width (upper rim) × height: 11.5 × 30.5 cm / 4.5 × 12 in. Hand painting, gilding with 24K gold / colour: dark violet.



HENRIETTA VASE
EAGLE ENGR.

hand painting and gilding
with 24K gold
topaz underlaid with aurora
12 x 40 cm
4.7 x 15.7 in
3357



HENRIETTA VASE
BIRD ENGR.

hand painting, gilding
with 24K gold, fused acorns
aquamarine
12 x 40 cm
4.7 x 15.7 in
3357

HENRIETTA

DESIGN: 1885 / 50-PIECE LIMITED EDITIONS

The original shape is modified and stylised to a contemporary archetype, decorated with an embossed painting and gold. The decoration is accompanied by embossed painted motifs created using a technique patented by Ludwig Moser in the then Austro-Hungarian Empire in 1878.



ARABESQUE

DESIGN: 1920-1930 / 160-PIECE LIMITED EDITION

The fineness and elegance of cut patterns are punctuated by gold-painted lines and ornaments. The bowl uniquely combines several artistic styles with masterful craftsmanship.

Bowl, cat. no. 3364, width (upper rim) x height: 31 x 16 cm / 12.2 x 6.3 in. Hand painting, gilding with 24K gold / colour: dark blue.



VERONA

DESIGN: 2014 / 50-PIECE LIMITED EDITION

This set, originally designed in the 1920s, the golden age of glass painting, boasts a unique décor that combines several traditional ornamental patterns.

The hand-cut crystal is decorated with embossed and transparent glass paints, and nearly the entire surface is covered with detailed paintings and pure gold lines.

Vase, cat. no. 3203, width (upper rim) x height: 16 x 40 cm / 6.3 x 15.7 in. Bowl, cat. no. 3204, width (upper rim) x height: 23.5 x 22 cm / 9.3 x 8.7 in. The vase and bowl are only available in clear crystal with a gold decoration.

CHLOE

DESIGN: 1895 / 300-PIECE LIMITED EDITION

This inventively designed double-sided cup is adorned using a technique of ribbed optical decorations.

It bears a floral ornament, excellently rendered in enamels and gold in a style bordering between historicism and Art Nouveau. It is given lightness and elegance through a delicate combination of underlaid colours - reseda and rose or amethyst and blue.



GOBLET

hand painting and gilding with 24K gold
clear crystal underlaid with reseda,
clear crystal underlaid with rose
6.7 x 30 cm
2.6 x 11.8 in
3365
limited edition / 300 pcs



GOBLET

hand painting and gilding with 24K gold
clear crystal underlaid with blue,
clear crystal underlaid with amethyst
6.7 x 30 cm
2.6 x 11.8 in
3365
limited edition / 300 pcs

HERITAGE

DECORATIVE ARTWORKS

THE EXCEPTIONAL IS INHERITED FROM GENERATION TO GENERATION, AND THE SAME IS TRUE IN MOSER. EXPERIENCED MASTERS OF GLASSMAKING PASS ON THEIR SKILLS TO YOUNGER GENERATIONS SO THAT WE, ADMIRERS OF CRYSTAL, CAN ENJOY UNIQUE DESIGNS MORE THAN A CENTURY AFTER THEIR INCEPTION.

EVERY OBJECT FROM THE HERITAGE SERIES IS AN EXCEPTIONAL WORK OF ART THAT TAKES FULL ADVANTAGE OF THE MASTERY OF MOSER GLASSBLOWERS, CUTTERS AND ENGRAVERS.

Their authors are the most famous artists that have ever worked for the Moser brand, including Leo Moser, Alexander Pfohl, Rudolf Wels or Arnold Zadikow. All works from the Heritage category thus carry high artistic, collectible and investment value.



VERSAILLES

DESIGN: 1895

BEAUTY IN EVERY DETAIL

This classical hand-cut and engraved bowl is a beautiful example of the skill of Karlsbad master glassblowers, cutters and engravers. Its shape is among the jewels of Moser tradition, having been designed already back in 1895. The look is punctuated by a masterful engraving of figural motifs based on rococo paintings by J. A. Watteau, as rendered at the time by master Konstantin Hable Sr. Today, it is brilliantly made by Roman Chalupka.

Bowl, cat. no. 20299, width (upper rim) x height: 42 cm x 21.9 cm / 16.5 x 8.6 in. The bowl is available in clear crystal and all basic colours, with an engraved motif. Photo colours: alexandrite, aquamarine (from the left).

ROYAL HIGHNESS

DESIGN: 1938

DIVINE INSPIRATION

The boat-shaped Neptune bowl ranks among the exceptional works of art that fully employ the masterful skills of Moser glassblowers, cutters and engravers. From the wide foot to the breaking wave at the edge of the chalice, every detail is divinely refined.



The design and first rendition with the god of the sea, which were created in 1938, originate from one of the most famous Moser engravers, Konstantin Hable Sr.

Bowl, cat. no. 20689, width (upper rim) x height: 20.7 x 27 cm, 28.6 x 35 cm / 8.1 x 10.6 in, 11.3 x 13.7 in. The bowl is available in clear crystal and all basic colours, with an engraved motif. Photo colour: aquamarine.

FAN

DESIGN: 1925 / LOTTE P. MOSER

PHENOMENAL ART DECO

The technologically demanding shape of the vase builds on the decorative principles of Art Deco. Courage in searching for new glassmaking techniques has certainly paid off.



Like the entire vase set of Lotte's design, this fan-shaped object, elegantly seated on a pyramidal pedestal, won the Gold Medal at the 1925 International Exhibition of Modern Decorative and Industrial Arts in Paris..

Vase, cat. no. 4928, width (upper rim) x height: 27 x 21 cm, 35.7 x 27 cm / 10.6 x 8.3 in, 14 x 10.6 in. The vase is available in clear crystal and all basic colours. Photo colour: topaz.



BELVEDERE

DESIGN: 1916

DINE AT THE IMPERIAL COURT

This beautifully cut and engraved bowl complements the Maria Theresa drinking collection, one of the prime examples of the skills of Moser engravers. Aside from a magnificent engraving, Belvedere also boasts a precise cut and richly shaped stem with detailed facets.

Bowl, cat. no. 801, width (upper rim) x height: 42 x 25.3 cm / 16.5 x 9.9 in. The bowl is available in clear crystal and all basic colours, with an engraved motif. Photo colour: alexandrite.

CONTEMPORARY

DRINKING SETS

CONTEMPORARY SETS OF DRINKING CRYSTALWARE PROUDLY BEAR MODERN PENMANSHIP BUT ARE CREATED USING HIGHLY TRADITIONAL MANUAL TECHNIQUES.

Lead-free crystal allows all nuances of the drink's flavour to shine through, while unique Moser colour schemes introduce modern freshness. All that in an insurmountable quality that goes hand in hand with the Moser name since 1857.



PATRIK ILLO

A glass designer that combines respect for the craft with experimenting, serial design and the creation of unique artefacts. He graduated from The Academy of Fine Arts and Design in Bratislava and studied in the UK, France and Italy. He creates designs for leading European domestic glassware producers while also focusing on experimental design and curatorship.

OENO

DESIGN: 2010 / PATRIK ILLO



IN WINE THERE IS
TRUTH, IN CRYSTAL THERE IS
BEAUTY

The Oeno set was created in collaboration with experienced sommeliers to delight every fan of good wine. The fundamental morphology of the drinking set contains the silhouette of a droplet within, the gracefully flowing curves of which leave a harmonic and soothing impression.

Wine decanter, cat. no. 29690, capacity / width x height: 1250 ml / 8.6 (max. width 23.5) x 24.5 cm / 1.25 qt. / 3.4 (max. width 9.2) x 9.6 in. The decanter height is specified without a stopper. Customisable with a coat of arms or initials.





WHITE WINE

350 ml / 5.4 x 21.7 cm
11.83 oz / 2.1 x 8.5 in
29904



WHITE WINE

500 ml / 6 x 24.5 cm
16.9 oz / 2.4 x 9.6 in
29903



WHITE WINE

620 ml / 6.2 x 23.7 cm
20.96 oz / 2.4 x 9.3 in
29902



RED WINE

650 ml / 7.4 x 22.1 cm
21.97 oz / 2.9 x 8.7 in
29901



CHAMPAGNE

200 ml / 4.2 x 24.6 cm
6.76 oz / 1.7 x 9.7 in
29911/f



WATER

1000 ml / 6.8 x 31 cm
1 qt. / 2.2 x 12.2 in
29910/l



WHISKY

360 ml / 6.1 x 9.5 cm
12.17 oz / 2.4 x 3.7 in
29908/O



WATER

400 ml / 5.4 x 14.5 cm
13.52 oz / 2.1 x 5.7 in
29918

Capacity (ml) / width x height (cm). The width measurements refer to the bottom of decanters and jugs and to the top edge of all other shapes. Customisable with a coat of arms or initials.

OPTIC

DESIGN: 2012 / LUKÁŠ JABŮREK

THE MOOD CHANGES BEFORE YOUR EYES

Through the ever-thinning walls of the glasses, the range of Moser colours transitions from radiant contrasts to the mildest shades at the edge of the goblet. Similarly intriguing is the fragile network of light fibres and reflections that forms beneath the surface of each glass.

"The Optic set has many faces. Crystal lends them lightness and elegance," says the author about his favourite set.



WHISKY
ALEXANDRITE

360 ml / 6.9 x 9.8 cm
12.17 oz / 2.7 x 3.9 in
30148/O



WHISKY
AQUAMARINE

360 ml / 6.9 x 9.8 cm
12.17 oz / 2.7 x 3.9 in
30148/O



WHISKY
ELDOR

360 ml / 6.9 x 9.8 cm
12.17 oz / 2.7 x 3.9 in
30148/O



WHISKY
ROSALIN

360 ml / 6.9 x 9.8 cm
12.17 oz / 2.7 x 3.9 in
30148/O



WHISKY
BERYL

360 ml / 6.9 x 9.8 cm
12.17 oz / 2.7 x 3.9 in
30148/O



WHISKY
TOPAZ

360 ml / 6.9 x 9.8 cm
12.17 oz / 2.7 x 3.9 in
30148/O



ONE COULD BE FORGIVEN FOR THINKING THAT THE OPTIC SET IS MADE UP SOLELY OF A NETWORK OF LIGHT FIBRES AND REFLECTIONS.

Each glass has its own character, but not one of them hides its nature from you. On the contrary, they are all too happy to keep you company. Together, you can board a magical merry-go-round of inspiration and joie de vivre.



SMALL BOWL

13 x 10 cm
5.1 x 3.9 in
30157



SMALL BOWL

10 x 2.5 cm
3.9 x 1 in
30153



WHISKY

360 ml / 6.9 x 9.8 cm
12.17 oz / 2.7 x 3.9 in
30148/O



SPIRITS

80 ml / 4 x 7.5 cm
2.7 oz / 1.6 x 3 in
30158



WHITE WINE

250 ml / 6.5 x 19.2 cm
8.45 oz / 2.6 x 7.6 in
30143



WHITE WINE

350 ml / 7.2 x 20.7 cm
11.83 oz / 2.8 x 8.1 in
30142



RED WINE

450 ml / 8.5 x 18 cm
15.21 oz / 3.3 x 7.1 in
30141



WINE

1250 ml / 8.4 x 27.3 cm
1.25 qt. / 3.3 x 10.7 in
30150



CHAMPAGNE

200 ml / 4.5 x 23.5 cm
6.76 oz / 1.8 x 9.3 in
30151/f



MARTINI

290 ml / 13 x 18.5 cm
9.8 oz / 5.1 x 7.3 in
30149



WATER

350 ml / 5.4 x 15 cm
11.83 oz / 2.1 x 5.9 in
30158/l



WATER

1500 ml / 12.2 x 22 cm
1.5 qt. / 4.8 x 8.6 in
30159

WELLENSPIEL

DESIGN: 1997 / SABINE WACHS

ENJOY THE MAGICAL PLAY OF WAVES

The delicate optical pattern on these glasses was inspired by the ceaseless movement of the sea. The barely visible waves washing against the surface of the cup will reward you with an enchanting sparkle and dance of lights and shadows that each type of wine sets in motion in its own unique way.



WATER
ALEXANDRITE

290 ml / 6.6 x 22.5 cm
9.8 oz / 2.6 x 8.9 in
29161



WATER
AQUAMARINE

290 ml / 6.6 x 22.5 cm
9.8 oz / 2.6 x 8.9 in
29161



WATER
ELDOR

290 ml / 6.6 x 22.5 cm
9.8 oz / 2.6 x 8.9 in
29161



WATER
ROSALIN

290 ml / 6.6 x 22.5 cm
9.8 oz / 2.6 x 8.9 in
29161



WATER
BERYL

290 ml / 6.6 x 22.5 cm
9.8 oz / 2.6 x 8.9 in
29161



WATER
TOPAZ

290 ml / 6.6 x 22.5 cm
9.8 oz / 2.6 x 8.9 in
29161



**RED WINE**

640 ml / 7.7 x 21.1 cm
21.64 oz / 3 x 8.3 in
29161

**RED WINE**

590 ml / 7.9 x 22.5 cm
19.95 oz / 3.1 x 8.9 in
29161

**WHITE WINE**

180 ml / 5.6 x 20.4 cm
6.08 oz / 2.2 x 8 in
29162

**WINE**

160 ml / 6.1 x 18.5 cm
5.41 oz / 2.4 x 7.3 in
29163

**CHAMPAGNE**

170 ml / 4.4 x 23 cm
5.74 oz / 1.7 x 9.1 in
29171/f

**WATER**

290 ml / 6.6 x 22.5 cm
9.8 oz / 2.6 x 8.9 in
29161

**BEER**

330 ml / 6.1 x 17.5 cm
11.15 oz / 2.4 x 6.9 in
29176

**LIQUEUR**

50 ml / 5 x 15.5 cm
1.69 oz / 2 x 6.1 in
29165

Capacity (ml) / width (upper rim) x height (cm). The Wellenspiel set is available in clear crystal and all basic colours.

SABINE WACHS

The "Play of Waves" collection was designed by German designer Sabine Wachs, the author of the dining, tea and coffee sets of the same name, produced by the famous Meissen porcelain manufactory. After studying at the University of Industrial Design in Halle, Sabine became one of the most prominent table set designers, and Wellenspiel is her masterpiece.



BOUQUET

DESIGN: 2020 / MOSER

IN BOUQUET VERITAS

The name of this modern collection references both the sensory properties of wine and the art of floristics. Its unpretentiously attractive yet confident design is a faithful companion to your drink without becoming its competitor.

Whether you are a sommelier or simply a lover of good wine, you are certain to find truth and delight in Bouquet. Bouquet is available in clear crystal or characteristic Moser colours to adorn your vinotheque.



**WINE**

870 ml / 9.5 x 25.5 cm
29.41 oz / 3.7 x 10 in
30281

**WINE**

550 ml / 8.1 x 22 cm
18.59 oz / 3.2 x 8.7 in
30281

**WINE**

620 ml / 7.5 x 26.6 cm
20.96 oz / 3 x 10.5 in
30282

**WINE**

350 ml / 6.5 x 23 cm
11.83 oz / 2.6 x 9.1 in
30283

**CHAMPAGNE**
CLEAR CRYSTAL, ROSALIN

250 ml / 6 x 25.5 cm
8.45 oz / 2.4 x 10 in
30291/f

**CHAMPAGNE**
CLEAR CRYSTAL, ROSALIN

460 ml / 5.8 x 29.6 cm
15.55 oz / 2.3 x 11.7 in
30291/f

**BEER**

360 ml / 6.5 x 18.5 cm
12.17 oz / 2.6 x 7.3 in
30296

**WINE**

1500 ml / 5 x 24.8 cm
1.5 qt. / 1.9 x 9.8 in
30290

**WINE**
CLEAR CRYSTAL, ROSALIN

1500 ml / 7.5 x 30 cm
1.5 qt. / 3 x 11.8 in
30290

**WATER**
CLEAR CRYSTAL, ROSALIN

1500 ml / 7 x 28 cm
1.5 qt. / 2.8 x 11 in
30299

**WATER**
BERYL

570 ml / 9 x 11 cm
19.27 oz / 3.5 x 4.3 in
30288

**WHISKY**
BERYL

300 ml / 7.8 x 9.5 cm
10.14 oz / 3.1 x 3.7 in
30288

**SPIRITS**
BERYL

130 ml / 5.8 x 7 cm
4.39 oz / 2.3 x 2.8 in
30288

**LIQUEUR**
CLEAR CRYSTAL, BERYL

60 ml / 4.3 x 12 cm
2.02 oz / 1.7 x 4.7 in
30286

Capacity (ml) / width x height (cm). The width measurements refer to the bottom of decanters and jugs and to the top edge of all other shapes. The Bouquet set is available in clear crystal or clear crystal combined with rosalin or beryl. Tumblers are available in all basic colours. Customisable with a coat of arms or initials.

SONNET

DESIGN: 2020, STUDIO IRDS

A DISCREET BEAUTY

The Sonnet set is among the jewels of contemporary drinking set design. Its character is dictated by the minimalist outlines of smooth walls and energetic cut in perfectly balanced proportions. Your champagne, wine or water will always have a genuine spark.



WATER
ALEXANDRITE

370 ml / 8.2 x 15.1 cm
12.51 oz / 3.2 x 5.9 in
29758/I



WATER
AQUAMARINE

370 ml / 8.2 x 15.1 cm
12.51 oz / 3.2 x 5.9 in
29758/I



WATER
ELDOR

370 ml / 8.2 x 15.1 cm
12.51 oz / 3.2 x 5.9 in
29758/I



WATER
ROSALIN

370 ml / 8.2 x 15.1 cm
12.51 oz / 3.2 x 5.9 in
29758/I



WATER
BERYL

370 ml / 8.2 x 15.1 cm
12.51 oz / 3.2 x 5.9 in
29758/I



WATER
TOPAZ

370 ml / 8.2 x 15.1 cm
12.51 oz / 3.2 x 5.9 in
29758/I

Capacity (ml) / width x height (cm). The Sonnet set is available in clear crystal and all basic colours. Customisable with a coat of arms or initials.





WINE

1000 ml / 8 x 33 cm
1 qt. / 3.1 x 13 in
29750/I



WATER

1500 ml / 8.5 x 31 cm
1.5 qt. / 3.3 x 12.2 in
29759



WHITE WINE

220 ml / 9 x 23.6 cm
7.43 oz / 3.5 x 9.3 in
29742



RED WINE

270 ml / 9.8 x 25.6 cm
9.12 oz / 3.9 x 10.1 in
29741



CHAMPAGNE

140 ml / 6.3 x 27 cm
4.73 oz / 2.5 x 10.6 in
29751/f



WATER

370 ml / 8.2 x 15.1 cm
12.51 oz / 3.2 x 5.9 in
29758/I



WHISKY

330 ml / 9.6 x 10.6 cm
11.15 oz / 3.8 x 4.2 in
29748/O

Capacity (ml) / width x height (cm). The decanter height is specified without a stopper. The width measurements refer to the bottom of decanters and jugs and to the top edge of all other shapes. The Sonnet set is available in clear crystal and all basic colours. Customisable with a coat of arms or initials.



JAN MAREŠ

Glass artist and painter born in Česká Lípa. A disciple of Stanislav Libenský and Jiří Hrcuba, he himself taught techniques of glass refining at Centre del Vidre in Barcelona, Pilchuck Glass School and Corning Studio in the US. He collaborated with Moser glassworks from 1992. His works are represented in many exhibition displays and private collections all over the world.

CASANOVA

DESIGN: 2014 / JAN MAREŠ

LET YOURSELF BE SEDUCED TO A TOAST

This collection, named after a Venetian adventurer, writer and famous seducer, does not look back at history. Rather, it looks towards new experiences through its clear crystal optics. Why battle temptation when succumbing can be so intoxicating?



**WHITE WINE**

220 ml / 9.2 x 21.9 cm
7.43 oz / 3.6 x 8.6 in
29622/PO + Au ring

**RED WINE**

300 ml / 9.7 x 22.9 cm
10.14 oz / 3.8 x 9 in
29621/PO + Au ring

**CHAMPAGNE**

240 ml / 6 x 25.2 cm
8.11 oz / 2.4 x 9.9 in
29631/f/PO + Au ring

**LIQUEUR**

100 ml / 7 x 19.3 cm
3.38 oz / 2.8 x 7.6 in
29624/PO Pt + Pt ring

**WATER**

360 ml / 9.9 x 24.4 cm
12.17 oz / 3.9 x 9.6 in
29621/PO + Au ring

**BEER**

300 ml / 8.6 x 21.9 cm
10.14 oz / 3.4 x 8.6 in
29636/PO Pt + Pt ring

**WINE**

1000 ml / 6.7 x 35.9 cm
1 qt. / 2.6 x 14.1 in
29630/l/PO + Au ring

**WATER**

1500 ml / 15.4 x 27.2 cm
1.5 qt. / 6 x 10.7 in
29639/PO Pt + Pt ring

**MARTINI**

160 ml / 11.9 x 18.5 cm
5.41 oz / 4.7 x 7.3 in
29629/PO + Au ring

**WATER**

450 ml / 6.7 x 19.3 cm
15.21 oz / 2.6 x 7.6 in
29638/l/PO Pt + Pt ring

**SPIRITS**

70 ml / 4 x 8.6 cm
2.36 oz / 1.6 x 3.4 in
29638/v/PO Pt + Pt ring

**WHISKY**

300 ml / 8 x 10.9 cm
10.14 oz / 3.1 x 4.3 in
29628/PO Pt + Pt ring

CUBISM

DESIGN: 2009 / RONY PLESL



WHISKY
CLEAR CRYSTAL
220 ml / 8 x 10.3 cm
7.43 oz / 3.1 x 4.1 in
29821



WHISKY
AQUAMARINE
220 ml / 8 x 10.3 cm
7.43 oz / 3.1 x 4.1 in
29821



WHISKY
TOPAZ
220 ml / 8 x 10.3 cm
7.43 oz / 3.1 x 4.1 in
29821



WHISKY
ELDOR
220 ml / 8 x 10.3 cm
7.43 oz / 3.1 x 4.1 in
29821



WHISKY
ROSALIN
220 ml / 8 x 10.3 cm
7.43 oz / 3.1 x 4.1 in
29821



WHISKY
ALEXANDRITE
220 ml / 8 x 10.3 cm
7.43 oz / 3.1 x 4.1 in
29821



WHISKY
BERYL
220 ml / 8 x 10.3 cm
7.43 oz / 3.1 x 4.1 in
29821

Capacity (ml) / width (upper rim) x height (cm). The Cubism set is available in clear crystal and all basic colours.

BONBON

DESIGN: 2014 / LUKÁŠ JABŮREK

SWEETEN UP YOUR LIFE

The Bonbon crystal set outright radiates the atmosphere of joy and optimism. The jars can serve as the hideaway for your favourite sweets, dried fruits or any other little something that takes your fancy. Whatever they conceal, just a glance at them will make you look forward to peeking inside.



JAR
CLEAR CRYSTAL, ALEXANDRITE

15 x 12.5 cm
5.9 x 4.9 in
3214/wedge cuts



JAR
CLEAR CRYSTAL, AQUAMARINE

15 x 12.5 cm
5.9 x 4.9 in
3214/wedge cuts



JAR
CLEAR CRYSTAL, ELDOR

15 x 12.5 cm
5.9 x 4.9 in
3214/wedge cuts



JAR
CLEAR CRYSTAL, ROSALIN

15 x 12.5 cm
5.9 x 4.9 in
3214/wedge cuts



JAR
CLEAR CRYSTAL, BERYL

15 x 12.5 cm
5.9 x 4.9 in
3214/wedge cuts



JAR
CLEAR CRYSTAL, TOPAZ

15 x 12.5 cm
5.9 x 4.9 in
3214/wedge cuts

Width x height (cm). Jar height is without a lid. The Bonbon set is available in clear crystal and all basic colours.





WHISKY
CLEAR CRYSTAL

370 ml / 8.8 x 10.1 cm
12.51 oz / 3.5 x 4 in
26638/1/wedge cuts



WHISKY
ELDOR

370 ml / 8.8 x 10.1 cm
12.51 oz / 3.5 x 4 in
26638/1/wedge cuts



WHISKY
TOPAZ

370 ml / 8.8 x 10.1 cm
12.51 oz / 3.5 x 4 in
26638/1/wedge cuts



WHISKY
ROSALIN

370 ml / 8.8 x 10.1 cm
12.51 oz / 3.5 x 4 in
26638/1/wedge cuts



WHISKY
ALEXANDRITE

370 ml / 8.8 x 10.1 cm
12.51 oz / 3.5 x 4 in
26638/1/wedge cuts



WHISKY
AQUAMARINE

370 ml / 8.8 x 10.1 cm
12.51 oz / 3.5 x 4 in
26638/1/wedge cuts



WHISKY
BERYL

370 ml / 8.8 x 10.1 cm
12.51 oz / 3.5 x 4 in
26638/1/wedge cuts



WHISKY
OCEAN GREEN

370 ml / 8.8 x 10.1 cm
12.51 oz / 3.5 x 4 in
26638/1/wedge cuts



VASE
CLEAR CRYSTAL,
ALEXANDRITE

15 x 37 cm
5.9 x 14.6 in
3234/wedge cuts



WHISKY
CLEAR CRYSTAL,
AQUAMARINE

1000 ml / 10.7 x 25.8 cm
1 qt. / 4.2 x 10.2 in
26630/1/wedge cuts



BOWL
CLEAR CRYSTAL, SMOKE

27 x 17 cm
10.6 x 6.7 in
3235/wedge cuts



LAMP SHADE
CLEAR CRYSTAL

15 x 30 cm
5.9 x 11.8 in
3315/wedge cuts



JAR
CLEAR CRYSTAL,
AQUAMARINE

15 x 20.5 cm
5.9 x 8 in
3214/wedge cuts



JAR
CLEAR CRYSTAL,
ALEXANDRITE

15 x 20.5 cm
5.9 x 8 in
3214/wedge cuts

Capacity (ml) / width x height (cm). The jar and decanter height is specified without a lid or a stopper respectively. The width measurements refer to the bottom of decanters and to the top edge of all other shapes. The Bonbon set is available in clear crystal and all basic colours.



PETR LARVA

Petr Larva is a designer, glass artist and the Art Director of Moser glassworks. He studied at the Academy of Arts, Architecture and Design in Prague in the glass studio of Vladimír Kopecký. He is the holder of a number of international awards.

Larva perceives glass as a medium that carries meaning, feeling and atmosphere. His works are a part of several museum collections and can even be found in presidential offices in Europe and the US.

SOLARIS

DESIGN: 2021 / PETR LARVA

A GOLD MIRROR AT THE BOTTOM OF EVERY GLASS

Crystal glasses from the Solaris set shine like the sun. Twelve cut sides terminating with a facet amplify the reflections of 24-carat gold covering the underside of the robust bottom. The entire set is interwoven by a confident common thread of straight shapes and a layer of rare metal, which reflects the light and movement of the surrounding world.





WHISKY

750 ml / 10 x 26 cm
25.36 oz / 4 x 10.2 in
30350/1



WATER, LONG DRINK

385 ml / 7.3 x 16.8 cm
13 oz / 2.9 x 6.6 in
30341



WHISKY

310 ml / 8.8 x 10.1 cm
10.48 oz / 3.5 x 4 in
30358/1



SPIRITS

100 ml / 5.9 x 9.3 cm
3.38 oz / 2.3 x 3.7 in
30346

Capacity (ml) / width x height (cm). The decanter height is specified without a stopper.
The width measurements refer to the bottom of decanters and to the top edge of all other shapes.

CLASSIC

DRINKING SETS

SUCCUMB WITH US TO THE MAGIC OF TIMELESS SETS THAT HAVE LOST NONE OF THEIR PERFECTION DESPITE THEIR AGE.

Before a Moser glass can become a true gem, it goes through the hands of dozens of craftsmen. Mastery of the art of glassmaking is evidenced both in the detail of each individual cup, decanter or jug and in the generously conceived sets that shine on ceremonial tables, at royal weddings and state receptions alike.

SPLENDID

DESIGN: 1911

MAKE AN IMPRESSION ON YOUR GUESTS

Back in 1911, Leo Moser and his glassmakers created a highly presentable collection of crystalware that shines bright on royal feasts and ceremonial tables at various social occasions to this day. Ownership of the most luxurious Moser set of all time always was and will be a matter of prestige and refined taste.

Owners of the Splendid set include many royal families, statesmen and other prominent figures. It has become a tradition that Moser engravers personalise the set with family coats of arms or initials.



COGNAC

1000 ml / 4.9 x 17.1 cm
1 qt. / 2 x 6.7 in
16530/1/10160/OP



WATER

1500 ml / 14.8 x 26.2 cm
1.5 qt. / 5.8 x 10.3 in
10179/OP



BRANDY & COGNAC

750 ml / 10.8 x 17 cm
25.36 oz / 4.3 x 6.7 in
2496/10160/OP

Capacity (ml) / width x height (cm). The decanter height is specified without a stopper. The width measurements refer to the bottom of decanters and jugs. Customisable with a coat of arms or initials (a special type of the Splendid set with a decoration designed to bear initials). The Splendid set is available in clear crystal with a gold (OP) or platinum decoration (OP pt).

**WHITE WINE**

200 ml / 8.6 x 19.8 cm
6.76 oz / 3.4 x 7.8 in
10162/OP

**RED WINE**

260 ml / 9.7 x 22 cm
8.79 oz / 3.8 x 8.7 in
10161/OP

**CHAMPAGNE**

185 ml / 7.3 x 23.6 cm
6.25 oz / 2.9 x 9.3 in
10171/f/OP

**WATER**

180 ml / 7.7 x 13.5 cm
6.08 oz / 3 x 5.3 in
10178/l/OP

**LIQUEUR**

45 ml / 5.5 x 12.4 cm
1.52 oz / 2.2 x 4.9 in
10165/OP

**BRANDY & COGNAC**

320 ml / 6.3 x 12.3 cm
10.82 oz / 2.5 x 4.8 in
4669/l/10160/OP

**WHISKY**

370 ml / 10.2 x 10.6 cm
12.51 oz / 4 x 4.2 in
10168/O/OP

**SPIRITS**

40 ml / 4.8 x 6.8 cm
1.35 oz / 1.9 x 2.7 in
10178/v/OP

**WINE**

1000 ml / 13.5 x 29.8 cm
1 qt. / 5.4 x 11.7 in
10170/l/OP

**CHAMPAGNE ICE BUCKET**

21.8 x 27 cm
8.6 x 10.6 in
10160/EC/OP

**CUP**

140 ml / 7.7 x 10.4 cm
4.73 oz / 3 x 4.1 in
10160/K/OP

**MUG**

500 ml / 8.2 x 14.8 cm
17 oz / 3.2 x 5.8 in
2416/10160/OP

**ICE CREAM**

340 ml / 12.4 x 8.9 cm
11.49 oz / 4.9 x 3.5 in
10177/OP

**SMALL BOWL**

12.1 x 6.3 cm
4.8 x 2.5 in
10172/OP

**SALT CELLAR**

7.5 x 6 cm
3 x 2.4 in
10160/SL/OP

**PEPPERPOT**

6 x 3.4 cm
2.4 x 1.3 in
10160/R/OP

Capacity (ml) / width x height (cm). The decanter height is specified without a stopper. The width measurements refer to the bottom of decanters and jugs and to the top edge of all other shapes. Customisable with a coat of arms or initials (a special type of the Splendid set with a decoration designed to bear initials). The Splendid set is available in clear crystal with a gold (OP) or platinum decoration (OP pt).

**CENTREPIECE**

24.5 x 17.5 cm
9.6 x 6.9 in
10174/N/OP

**BOWL**

23 x 13.3 cm
9.1 x 5.2 in
910/10160/OP

**OVAL BOWL**

35.8 x 20.8 cm
14.1 x 8.2 in
910/10160/OP

**BOWL**

41.8 x 25.3 cm
16.5 x 10 in
801/10160/OP

**IKEBANA**

8.5 x 27.6 cm
3.3 x 10.9 in
2346/1/10160/OP

**VASE**

10.4 x 33.1 cm
4.1 x 13 in
5006/10160/OP

**VASE**

17.5 x 27.8 cm
6.9 x 10.9 in
626/10160/OP

**VASE**

17 x 30 cm
6.7 x 11.8 in
579/10160/OP

**DECORATION**

6.6 x 14.4 cm
2.6 x 5.6 in
10160/OZ/OP

**SUGAR BOWL**

11.4 x 7 cm
4.5 x 2.8 in
10160/Z/OP

**BUSINESS CARD STAND**

depth 3.5 x width 10.1 x height 8 cm
depth 1.4 x width 4 x height 3.1 in
10160/ST/OP

**NAPKIN HOLDER**

depth 5.5 x width 17.9 x height 14 cm
depth 2.6 x width 7 x height 5.5 in
10160/ST/OP

**ASHTRAY**

16 x 6 cm
6.3 x 2.4 in
560/D/10160/OP

**CANDLESTICK**

5 x 22.8 cm
3.1 x 8.9 in
1019/10160/OP

**JAR**

8.9 x 5.6 cm
3.5 x 2.2 in
10160/D/OP

**CHOPSTICK HOLDER**

1.6 x 7 cm
0.6 x 2.8 in
10160/CH/OP

**NAPKIN RING**

4.3 x 4.5 cm
1.7 x 1.8 in
10160/U/OP

**TOOTHPICK HOLDER**

4.3 x 8 cm
1.7 x 3.1 in
10160/PA/OP

Width x height (cm). Jar and sugar bowl height are without a lid. The width measurements refer to the bottom of ikebana and decoration and to the top edge of all other shapes. Customisable with a coat of arms or initials (a special type of the Splendid set with a decoration designed to bear initials). The Splendid set is available in clear crystal with a gold (OP) or platinum decoration (OP pt).

ROYAL

DESIGN: 1907

LESS IS MORE

The wholly timeless nature of this collection is a testament to the prescience of the Moser family. The Royal drinking set was created back in 1907. With its austere look, its design matches the New Empire aesthetic that was gaining popularity at the start of the century at the expense of Art Nouveau ornateness.

The perfection of classical shapes and subtle decoration by a precise cut and minimum gold lends a confident and solid character to the set.



WINE

1000 ml / 10.4 x 25.3 cm
33.81 oz / 4.2 x 10 in
9010/I/PO



WATER

1500 ml / 8.8 x 26.2 cm
15.72 oz / 3.5 x 10.3 in
9019/PO



TEA

120 ml / 6.4 x 9.4 cm
4.06 oz / 2.5 x 3.7 in
9000/9013/PO

Capacity (ml) / width x height (cm). The decanter height is specified without a stopper. The width measurements refer to the bottom of decanters and jugs and to the top edge of all other shapes. The Royal set is available in clear crystal with a gold (PO) or platinum rim (PO pt). Customisable with a coat of arms or initials.



**WHITE WINE**

280 ml / 8.6 x 16.3 cm
9.46 oz / 3.4 x 6.4 in
9001/PO

**RED WINE**

360 ml / 9.2 x 17.3 cm
12.17 oz / 3.6 x 6.8 in
9001/PO

**CHAMPAGNE**

180 ml / 5.8 x 21 cm
6.08 oz / 2.3 x 8.3 in
9011/f/PO

**BRANDY & COGNAC**

320 ml / 6.5 x 12 cm
10.82 oz / 2.6 x 4.7 in
4669/l/9000/PO

**WATER**

300 ml / 8 x 13.4 cm
10.14 oz / 3.1 x 5.3 in
9018/l/PO

**WHISKY**

370 ml / 8.6 x 9.7 cm
12.51 oz / 3.4 x 3.8 in
9008/O/PO

**SPIRITS**

70 ml / 4.6 x 7.8 cm
2.36 oz / 1.8 x 3.1 in
9018/lv/PO

**LIQUEUR**

40 ml / 4.6 x 9.8 cm
1.35 oz / 1.8 x 3.9 in
9005/PO

Capacity (ml) / width (upper rim) x height (cm). The Royal set is available in clear crystal with a gold (PO) or platinum rim (PO pt). Customisable with a coat of arms or initials.



LADY HAMILTON

DESIGN: 1934

FATEFUL ATTRACTION

Six wide arched facets decorate the walls of the glass as it gradually thins towards the rim. This so-called "papal cut" requires maintaining precise proportions, depth and width of the surfaces, making it a task only for true masters. The noble and elegant shape of the goblets is accompanied by a gold or platinum decoration lining the rim of the glass.



CHAMPAGNE
CLEAR CRYSTAL

140 ml / 6.5 x 19.7 cm
4.73 oz / 2.6 x 6.8 in
15011/xx/f



CHAMPAGNE
CLEAR CRYSTAL
OVERLAID WITH
RESEDA

140 ml / 6.5 x 19.7 cm
4.73 oz / 2.6 x 6.8 in
15011/xx/f



CHAMPAGNE
CLEAR CRYSTAL
OVERLAID WITH
GREEN

140 ml / 6.5 x 19.7 cm
4.73 oz / 2.6 x 6.8 in
15011/xx/f



CHAMPAGNE
CLEAR CRYSTAL
OVERLAID WITH
BLUE

140 ml / 6.5 x 19.7 cm
4.73 oz / 2.6 x 6.8 in
15011/xx/f



CHAMPAGNE
CLEAR CRYSTAL
OVERLAID WITH
ROSE

140 ml / 6.5 x 19.7 cm
4.73 oz / 2.6 x 6.8 in
15011/xx/f



CHAMPAGNE
CLEAR CRYSTAL
OVERLAID WITH
AMETHYST

140 ml / 6.5 x 19.7 cm
4.73 oz / 2.6 x 6.8 in
15011/xx/f



CHAMPAGNE
CLEAR CRYSTAL
OVERLAID WITH
AURORA

140 ml / 6.5 x 19.7 cm
4.73 oz / 2.6 x 6.8 in
15011/xx/f

Capacity (ml) / width x height (cm). The Lady Hamilton set is available in clear crystal and all basic and overlaid colours, with a gold or platinum decoration. Customisable with a coat of arms or initials.

**WHITE WINE**

210 ml / 9.6 x 17.6 cm
7.10 oz / 3.8 x 6.9 in
15001

**RED WINE**

310 ml / 11 x 19.1 cm
10.5 oz / 4.4 x 7.6 in
15001

**LIQUEUR**

40 ml / 6 x 10.4 cm
1.35 oz / 2.4 x 4.1 in
15005

**WATER**

360 ml / 8.9 x 13.9 cm
12.17 oz / 3.5 x 5.5 in
15018/I

**SPIRITS**

45 ml / 4.8 x 7.5 cm
1.52 oz / 1.9 x 3 in
15018/VI

**WHISKY**

370 ml / 9.8 x 10.7 cm
12.51 oz / 3.9 x 4.2 in
15008/O

**BRANDY & COGNAC**

320 ml / 6.5 x 12 cm
10.82 oz / 2.6 x 4.7 in
4669/II/15000

**ICE CREAM**

380 ml / 12.3 x 10.8 cm
12.84 oz / 4.8 x 4.3 in
15017

**WINE**

920 ml / 9.5 x 28.2 cm
31.11 oz / 3.8 x 11.1 in
15010/I

**WATER**

1500 ml / 9.3 x 20.2 cm
1.5 qt. / 3.6 x 7.9 in
15019

**CENTREPIECE**

24.5 x 18.4 cm
9.6 x 7.2 in
15014/N/OP

**VASE**

14 x 35.5 cm
5.5 x 13.9 in
15000/V/OP

**OVAL BOWL**

34.6 x 21.5 cm
12.6 x 8.5 in
15015/O/M/OP

**OVAL BOWL**

34.6 x 21.5 cm
12.6 x 8.5 in
15015/O/M/OP pt.

**SMALL BOWL**

12.8 x 6 cm
5 x 2.4 in
15012

**ASHTRAY**

16 x 6 cm
6.3 x 2.4 in
560/E/OP

Capacity (ml) / width x height (cm). The decanter height is specified without a stopper. The width measurements refer to the bottom of decanters and jugs and to the top edge of all other shapes. The Lady Hamilton set is available in clear crystal and all basic and overlaid colours (except for the decanter and the jug), with a gold (OP) or platinum decoration (OP pt). Customisable with a coat of arms or initials.

PAULA

DESIGN: 1902

AN EXPERIENCE FOR ALL THE SENSES

You would be hard-pressed to find a chalice that stimulates the senses in so many ways as the glasses from the Paula collection. This engraved and gilded drinking set, first introduced back in 1902 and later named after Leo Moser's wife, is one of the most treasured jewels to have ever been created by Moser glassblowers, cutters, engravers and painters.

The design originates from a time when floral motifs influenced by French and Belgian Art Nouveau were gaining popularity. Further inspiration for the creators also came from the world fairs in Brussels (1897) and Paris (1900).



WINE

1000 ml / 12.8 x 42.5 cm
1 qt. / 5.1 x 16.7 in
7010/I/PO



WATER

1500 ml / 12.3 x 24.2 cm
1.5 qt. / 4.8 x 9.5 in
7019/PO



BRANDY & COGNAC

1000 ml / 13.2 x 18.8 cm
1 qt. / 5.3 x 7.4 in
2496/7000/PO

Capacity (ml) / width x height (cm). The decanter height is specified without a stopper. The width measurements refer to the bottom of decanters and jugs and to the top edge of all other shapes. The Paula set is available in clear crystal and all basic and underlaid colours, with a gold rim (PO).



**WHITE WINE**

180 ml / 8.7 x 23.7 cm
6.08 oz / 3.4 x 9.3 in
7002/PO

**RED WINE**

270 ml / 10 x 26 cm
9.12 oz / 3.9 x 10.2 in
7001/PO

**CHAMPAGNE**

140 ml / 6.5 x 27.2 cm
4.73 oz / 2.6 x 10.7 in
7011/f/PO

**LIQUEUR**

50 ml / 5.8 x 16 cm
1.69 oz / 2.3 x 6.3 in
7005/PO

**WATER**

370 ml / 7.9 x 13.3 cm
12.51 oz / 3.1 x 5.2 in
7018/l/PO

**BRANDY & COGNAC**

320 ml / 6.5 x 12 cm
10.82 oz / 2.6 x 4.7 in
04669/l/7000/PO

**WHISKY**

370 ml / 9.7 x 10.1 cm
12.51 oz / 3.8 x 4 in
7008/O/PO

**SPIRITS**

70 ml / 4.7 x 8 cm
2.36 oz / 1.9 x 3.1 in
7018/lV/PO

**VASE**

17.5 x 27.8 cm
6.9 x 10.9 in
626/7000/PO

**BOWL**

30 x 21.5 cm
11.8 x 8.5 in
540/7000/PO

**CANDLESTICK**

4.3 x 25.6 cm
1.7 x 10.1 in
7000/S/PO

**DECORATION**

6.3 x 15.9 cm
2.5 x 6.2 in
7000/OZ/PO

**ASHTRAY**

16 x 6 cm
6.3 x 2.4 in
560/E/7000/PO

MAHARANI

DESIGN: 1895

GOLD AND PEARLS IN EVERY GLASS

The Maharani set is characterised by the elegant shape of the chalice, which smoothly transitions into a stem cut to six facets. The lace-fine engraving of flower motifs is accompanied by hand-painted gold lines and a pearl cut.

The look of the current Maharani set is based on an original model created by the Meyr's Neffe glassworks located in Adolfov, Czech Republic. When the operation of the glassworks was taken over by Moser in the 1930s, the set quickly gained popularity and continues to entrance customers all over the world to this day.



WINE

1000 ml / 11 x 25.4 cm
1 qt. / 4.4 x 10 in
4410/I/PO



WATER

1500 ml / 10.9 x 30.2 cm
1.5 qt. / 4.3 x 11.9 in
4419/PO

Capacity (ml) / width x height (cm). The decanter height is specified without a stopper. The width measurements refer to the bottom of decanters and jugs. The Maharani set is available in clear crystal, with a gold rim (PO).



**WHITE WINE**

220 ml / 9.8 x 20.1 cm
7.43 oz / 3.9 x 7.9 in
4401/PO

**RED WINE**

330 ml / 10.7 x 21.5 cm
11.15 oz / 4.2 x 8.5 in
4401/*x/PO

**CHAMPAGNE**

160 ml / 7.5 x 21.8 cm
5.41 oz / 3 x 8.6 in
4411/*x/f/PO

**WATER**

400 ml / 8.7 x 14.2 cm
13.52 oz / 3.4 x 5.6 in
4418/l/PO

**LIQUEUR**

50 ml / 6.4 x 13.8 cm
1.69 oz / 2.5 x 5.4 in
4405/PO

**BRANDY & COGNAC**

320 ml / 6.5 x 12 cm
10.82 oz / 2.6 x 4.7 in
4669/II/4400/PO

**WHISKY**

370 ml / 10.2 x 10.6 cm
12.51 oz / 3.8 x 4 in
4408/O/PO

**SPIRITS**

60 ml / 4.6 x 8.6 cm
2.02 oz / 1.8 x 3.4 in
4418/IV/PO

**CENTREPIECE**

27.8 x 14.8 cm
10.9 x 5.8 in
4400/N/PO

**CENTREPIECE**

35 x 18.9 cm
13.8 x 7.4 in
4400/N/PO

**SMALL BOWL**

12.4 x 6.1 cm
4.9 x 2.4 in
4412/PO

**ICE CREAM**

320 ml / 12.5 x 9.1 cm
10.82 oz / 4.9 x 3.6 in
4417/PO

**CANDLESTICK**

3.7 x 26 cm
1.5 x 10.2 in
4400/S/PO

**DECORATION**

7.6 x 15.3 cm
3 x 6 in
4400/OZ/PO

COPENHAGEN

DESIGN: 1909

AN INVITATION TO THE WORLD OF LUXURY CRYSTAL

Among the most luxurious Moser collections, there is one that has been an inseparable part of major events and meetings at the Prague Castle since the days of the first Czechoslovak president, T. G. Masaryk. Its highly presentable looks have made this line of masterful Czech crystal popular among many heads of state all over the world.



WINE

1000 ml / 11 x 31.6 cm
1 qt. / 4.3 x 12.4 in
9910/1/OP



WATER

1500 ml / 12.5 x 30 cm
1.5 qt. / 4.9 x 11.8 in
9919/OP

Capacity (ml) / width x height (cm). The decanter height is specified without a stopper. The width measurements refer to the bottom of decanters and jugs. The Copenhagen set is available in clear crystal with a gold (OP) or platinum decoration (OP pt.). Customisable with a coat of arms or initials.





WHITE WINE

260 ml / 8.2 x 18 cm
8.79 oz / 3.2 x 7.1 in
9901/OP



RED WINE

340 ml / 8.9 x 19.8 cm
11.49 oz / 3.5 x 7.8 in
9901/OP



CHAMPAGNE

170 ml / 6.3 x 21 cm
5.74 oz / 2.5 x 8.3 in
9911/xx/f/OP



WATER

300 ml / 6.5 x 13 cm
10.14 oz / 2.6 x 5.1 in
9918/l/OP



WHISKY

370 ml / 8.1 x 10 cm
12.51 oz / 3.2 x 3.9 in
9908/OP



BRANDY & COGNAC

320 ml / 6.3 x 12.2 cm
10.82 oz / 2.5 x 4.8 in
4669/ll/9900/OP



LIQUEUR

40 ml / 4.6 x 10.1 cm
1.35 oz / 1.8 x 4 in
9905/OP



SPIRITS

50 ml / 3.9 x 6.6 cm
1.69 oz / 1.5 x 2.6 in
9918/vl/OP

Capacity (ml) / width (upper rim) x height (cm). The Copenhagen set is available in clear crystal with a gold (OP) or platinum decoration (OP pt.). Customisable with a coat of arms or initials.

POPE

DESIGN: 1916

MAJESTY AND HUMILITY

The iconic Moser collection that set the trend for drinking crystalware for the next century. A major contributor to such success was the exceptional harmony between the set's nigh-on unearthly beauty and everyday practicality, valued not only by the Pope himself but also by other prominent personalities of the ecclesiastical and diplomatic circles.



WINE

1000 ml / 9.9 x 27.8 cm
1 qt. / 4 x 10.9 in
11530/I



WATER

1000 ml / 12.5 x 23.7 cm
1 qt. / 4.9 x 9.3 in
11539

Capacity (ml) / width x height (cm). The decanter height is specified without a stopper. The width measurements refer to the bottom of decanters and jugs. The Pope set is available in clear crystal or with a gold or platinum decoration. Customisable with a coat of arms or initials.





WHITE WINE

170 ml / 8.7 x 18.9 cm
5.74 oz / 3.4 x 7.4 in
11521



RED WINE

280 ml / 9.6 x 20.7 cm
9.46 oz / 3.8 x 8.1 in
11521/xx



CHAMPAGNE

150 ml / 7.3 x 20.6 cm
5.07 oz / 2.9 x 8.1 in
11531/xx/f



WATER

320 ml / 8.9 x 12.8 cm
10.82 oz / 3.5 x 5 in
11538/l



LIQUEUR

35 ml / 5.6 x 12.1 cm
1.18 oz / 2.2 x 4.8 in
11524



BRANDY & COGNAC

320 ml / 6.3 x 12.2 cm
10.82 oz / 2.5 x 4.8 in
4669/11/11520



WHISKY

370 ml / 10.2 x 10.5 cm
12.51 oz / 4 x 4.1 in
11528/O



SPIRITS

50 ml / 5.3 x 7.2 cm
1.69 oz / 2.1 x 2.8 in
11538/V

Capacity (ml) / width (upper rim) x height (cm). The Pope set is available in clear crystal or with a gold or platinum decoration. Customisable with a coat of arms or initials.

MOZART

DESIGN: 1936 / OTTO TAUSCHEK

EACH NOTE IN ITS PLACE

This drinking collection from the mid-1930s is apparently inspired by rococo and classicist art. The smooth chalice of the glasses is decorated with a finely cut pearl rim, and the shape of the stem is reminiscent of the decorated legs of pianos and spinets from the era of the famous composer.

The classicist shape and delicate décor combined with a prominent cut look completely natural despite being the result of a highly demanding creation process. The Mozart drinking collection has been an evergreen among popular Moser sets for over 80 years.



WINE

1000 ml / 9,3 x 28,6 cm
1 qt. / 3,7 x 11,3 in
18290/1



WATER

1500 ml / 10,5 x 21,8 cm
1,5 qt. / 4,1 x 8,6 in
18299

OTTO TAUSCHEK

A painter and graphic artist, designer of porcelain and decorative glass, particularly with etched or painted decorations. He started designing for Moser glassworks in 1911 and created the look of the Mozart set in 1936. He also collaborated with the Rosenthal porcelain manufactory.

Capacity (ml) / width x height (cm). The decanter height is specified without a stopper. The width measurements refer to the bottom of decanters and jugs. The Mozart set is available in clear crystal. Customisable with a coat of arms or initials.





WHITE WINE

170 ml / 7.9 x 17.7 cm
5.74 oz / 3.1 x 7 in
18282



RED WINE

250 ml / 8.7 x 19.7 cm
8.45 oz / 3.4 x 7.8 in
18281



CHAMPAGNE

180 ml / 5.9 x 22.5 cm
6.08 oz / 2.3 x 8.9 in
18291/f



BRANDY & COGNAC

320 ml / 6.4 x 12.9 cm
10.82 oz / 2.5 x 5.1 in
4669/11/18280



WATER

400 ml / 8 x 14.2 cm
13.52 oz / 3.1 x 5.6 in
18298/l



WHISKY

370 ml / 9 x 10.4 cm
12.51 oz / 3.5 x 4.1 in
18288/O



SPIRITS

45 ml / 4.1 x 7.1 cm
1.52 oz / 1.6 x 2.8 in
18298/vi



LIQUEUR

50 ml / 5.3 x 11.9 cm
1.69 oz / 2.1 x 4.7 in
18285

Capacity (ml) / width (upper rim) x height (cm). The Mozart set is available in clear crystal. Customisable with a coat of arms or initials.

BAR

DESIGN: 1934 / RUDOLF ESCHLER



WHISKY

750 ml / 9.4 x 20.7 cm
25.36 oz / 3.7 x 8.1 in
16030/I



WATER

1500 ml / 10.4 x 20.2 cm
1.5 qt. / 4.1 x 8 in
16039



WATER

330 ml / 7.8 x 12.5 cm
11.15 oz / 3.1 x 4.9 in
16038/I



SPIRITS

45 ml / 4.8 x 6.2 cm
1.52 oz / 1.9 x 2.4 in
16025

COME HAVE A DRINK

The Bar set has received new additions combining clear crystal and underlaid Moser colours.

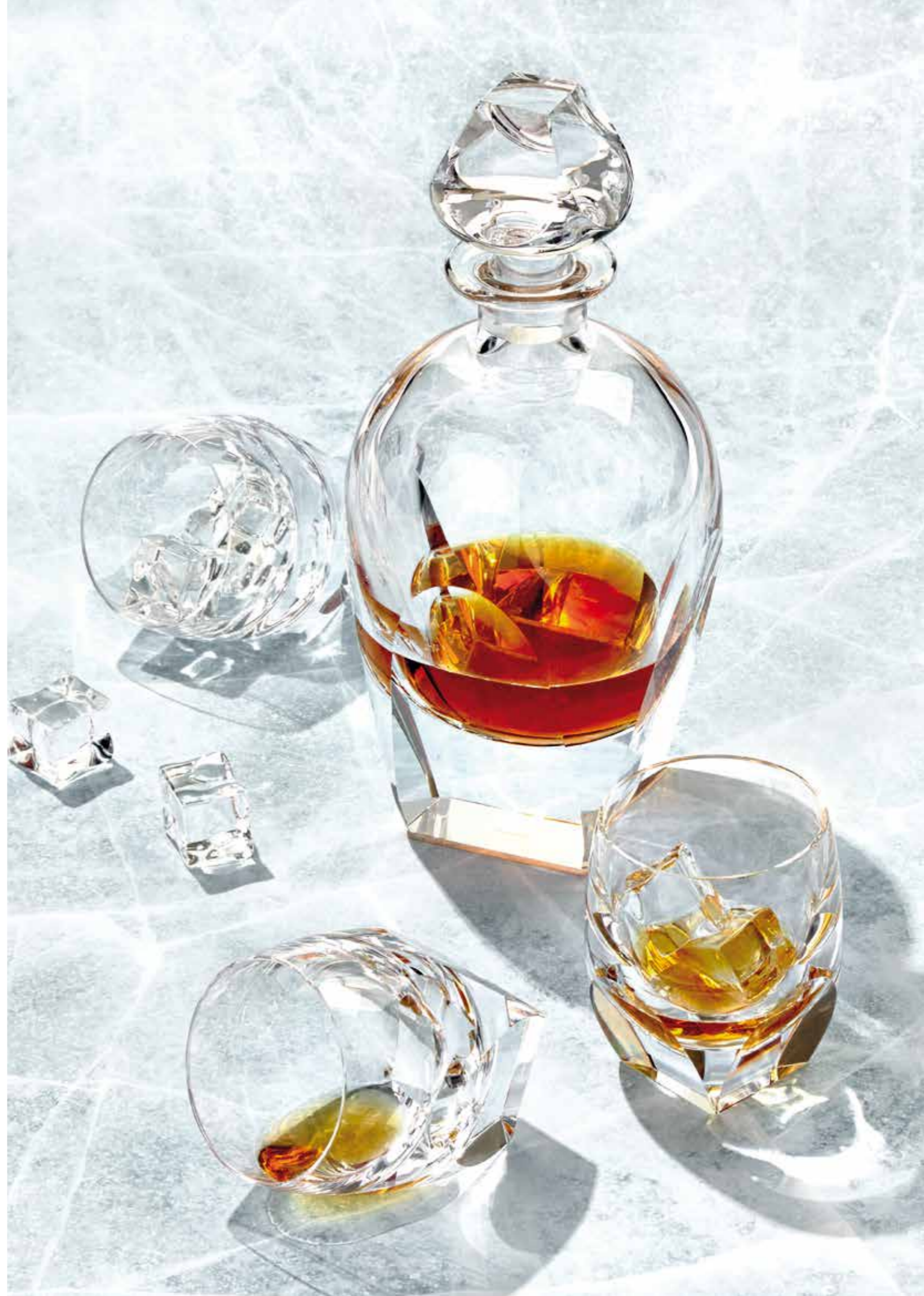
You can also choose from glasses in a uni-colour design, where the robust bottom highlights the hue of the glass in all its depth. Precisely cut arches beautifully reflect light, and the combination of round and square shapes references the austerity of functionalism of the 1930s.

RUDOLF ESCHLER

Designer Rudolf Eschler was one of Moser's most successful designers in the 1930s. His designs constituted a significant portion of Moser expositions at the world fairs in Chicago, Brussels and Paris. Aside from the Bar set, the Moser assortment still includes his Culbuto set to this day.

Collectors and auctioneers also highly value his toiletry and liqueur sets, characterised by strict prismatic shapes.

Capacity (ml) / width x height (cm). The decanter height is specified without a stopper. The width measurements refer to the bottom of decanters and jugs and to the top edge of all other shapes. The set is available in clear crystal, with a gold or platinum decoration. Customisable with a coat of arms or initials.





WHISKY
OCEAN GREEN

170 ml / 7.2 x 9.5 cm
5.74 oz / 2.8 x 3.7 in
16022



WHISKY
SMOKE

170 ml / 7.2 x 9.5 cm
5.74 oz / 2.8 x 3.7 in
16022



WHISKY
ELDOR

170 ml / 7.2 x 9.5 cm
5.74 oz / 2.8 x 3.7 in
16022



WHISKY
TOPAZ

170 ml / 7.2 x 9.5 cm
5.74 oz / 2.8 x 3.7 in
16022



WHISKY
ROSALIN

170 ml / 7.2 x 9.5 cm
5.74 oz / 2.8 x 3.7 in
16022



WHISKY
ALEXANDRITE

170 ml / 7.2 x 9.5 cm
5.74 oz / 2.8 x 3.7 in
16022



WHISKY
AQUAMARINE

170 ml / 7.2 x 9.5 cm
5.74 oz / 2.8 x 3.7 in
16022



WHISKY
BERYL

170 ml / 7.2 x 9.5 cm
5.74 oz / 2.8 x 3.7 in
16022



WHISKY
CLEAR CRYSTAL

170 ml / 7.2 x 9.5 cm
5.74 oz / 2.8 x 3.7 in
16022



WATER
CLEAR CRYSTAL

220 ml / 8 x 10.3 cm
7.43 oz / 3.1 x 4.1 in
16021



WATER
CLEAR CRYSTAL
UNDERLAID WITH AURORA

220 ml / 8 x 10.3 cm
7.43 oz / 3.1 x 4.1 in
16021



WATER
CLEAR CRYSTAL
UNDERLAID WITH ROSE

220 ml / 8 x 10.3 cm
7.43 oz / 3.1 x 4.1 in
16021



WATER
CLEAR CRYSTAL
UNDERLAID WITH AMETHYST

220 ml / 8 x 10.3 cm
7.43 oz / 3.1 x 4.1 in
16021



WATER
CLEAR CRYSTAL
UNDERLAID WITH BLUE

220 ml / 8 x 10.3 cm
7.43 oz / 3.1 x 4.1 in
16021



WATER
CLEAR CRYSTAL
UNDERLAID WITH RESEDA

220 ml / 8 x 10.3 cm
7.43 oz / 3.1 x 4.1 in
16021



WATER
CLEAR CRYSTAL
UNDERLAID WITH GREEN

220 ml / 8 x 10.3 cm
7.43 oz / 3.1 x 4.1 in
16021

Capacity (ml) / width (upper rim) x height (cm). The Bar set is available in clear crystal and all basic and underlaid colours, with a gold or platinum decoration. The bottle and the jug do not allow underlaying for technical reasons, meaning these are only available in clear or all-colour designs. Customisable with a coat of arms or initials.

CULBUTO

DESIGN: 1935 / RUDOLF ESCHLER

A PLAYTHING FOR YOU, A CHALLENGE FOR GLASSMAKERS

The smooth Culbuto drinking collection is the purest expression of functionalism, yet still leaves a light and harmonic impression. The seemingly simple shape of the thin-walled chalice requires a lot of experience and precision during blowing.

The basic clear crystal set will best highlight the colour of your favourite drink, but you can make use of other colour combinations just as well. The guests at your party will thus be able to pick the colour scheme that suits them best.



Decanter 1000 ml / 1 qt., cat. no. 16530/l, width (bottom edge) x height (cm): 5.5 x 17.1 cm / 2.2 x 6.7 in. The decanter height is specified without a stopper. Customisable with a coat of arms or initials.





TUMBLER
ELDOR

340 ml / 9.2 x 9 cm
11.49 oz / 3.6 x 3.5 in
16521



TUMBLER
TOPAZ

340 ml / 9.2 x 9 cm
11.49 oz / 3.6 x 3.5 in
16521



TUMBLER
ROSALIN

340 ml / 9.2 x 9 cm
11.49 oz / 3.6 x 3.5 in
16521



TUMBLER
ALEXANDRITE

340 ml / 9.2 x 9 cm
11.49 oz / 3.6 x 3.5 in
16521



TUMBLER
AQUAMARINE

340 ml / 9.2 x 9 cm
11.49 oz / 3.6 x 3.5 in
16521



TUMBLER
BERYL

340 ml / 9.2 x 9 cm
11.49 oz / 3.6 x 3.5 in
16521



TUMBLER
CLEAR CRYSTAL

330 ml / 7 x 13.1 cm
11.15 oz / 2.8 x 5.2 in
16538/I



SMALL BOWL
CLEAR CRYSTAL

11.7 x 5.7 cm
4.6 x 2.2 in
16532



TUMBLER

250 ml / 6.6 x 11.4 cm
8.45 oz / 2.6 x 4.5 in
16538/II



TUMBLER

150 ml / 5.5 x 9.7 cm
5.07 oz / 2.2 x 3.8 in
16538/III



TUMBLER

340 ml / 9.2 x 9 cm
11.49 oz / 3.6 x 3.5 in
16521



TUMBLER

240 ml / 8.3 x 8 cm
8.11 oz / 3.3 x 3.1 in
16522



TUMBLER

170 ml / 7.4 x 7.2 cm
5.74 oz / 2.9 x 2.8 in
16523



TUMBLER

100 ml / 6.5 x 6.4 cm
3.38 oz / 2.6 x 2.5 in
16524



TUMBLER

65 ml / 5.5 x 5.4 cm
2.19 oz / 2.2 x 2.1 in
16525



TUMBLER

30 ml / 4.7 x 4.5 cm
1.01 oz / 1.9 x 1.8 in
16526

WHISKY SET

DESIGN: 1968 / OLDŘICH LÍPA

DOUBLE THE PLEASURE

Perhaps you prefer your drink with ice, perhaps without. However, this beautiful whisky set is anything but ice cold. The popular set of glasses in minimalist design remains ever modern even though its year of birth (1968) would have allowed it to become the symbol of the Prague Spring.

"I always look for an idea in glass. I try to give it space. And music. I see things in colours even when I work with clear crystal," says the author about his work.



WHISKY
ALEXANDRITE / HUNT ENGR.

1000 ml / 10.7 x 25.8 cm
1 qt. / 4.2 x 10.2 in
26630/1



SPIRITS
ALEXANDRITE / HUNT ENGR.

60 ml / 5.1 x 6.7 cm
2.02 oz / 2 x 2.6 in
26627



WATER
OCEAN GREEN / SEA WORLD
ENGR.

400 ml / 7.3 x 16.8 cm
13.52 oz / 2.9 x 6.6 in
26621



WATER
AQUAMARINE / SEA WORLD
ENGR.

400 ml / 7.3 x 16.8 cm
13.52 oz / 2.9 x 6.6 in
26621



WHISKY
TOPAZ / HORSE
ENGR.

370 ml / 8.8 x 10.1 cm
12.51 oz / 3.5 x 4 in
26638/1

Capacity (ml) / width x height (cm). The decanter height is specified without a stopper. The width measurements refer to the bottom of decanters and to the top edge of all other shapes. Whisky Set is available in clear crystal and all basic colours, with a gold or platinum decoration. Whisky Set is available in a smooth design, with a pebble cut or with various engraved motifs. Customisable with a coat of arms or initials.



Pebble cut Whisky Set.

OLDŘICH LÍPA

A graduate of the glass studio of prof. Kaplický at the Academy of Arts, Architecture and Design in Prague. A versatile glass artist, author of distinctive drinking, decorative and cut engraved crystal.

A principal Moser designer for over 25 years. He took part in preparing Moser's expositions for the Milan Triennial XI and XII, the 1958 Brussels World's Fair, the 1967 International and Universal Exposition in Montreal and other international exhibitions.



WHISKY

1000 ml / 10.7 x 25.8 cm
1 qt. / 4.2 x 10.2 in
26630/1



WATER

1500 ml / 12.2 x 29.7 cm
1.5 qt. / 4.8 x 11.7 in
26639



WATER

220 ml / 7 x 11.4 cm
7.3 oz / 2.7 x 4.5 in
26624



WATER

400 ml / 7.3 x 16.8 cm
13.52 oz / 2.9 x 6.6 in
26621



SPIRITS

60 ml / 5.1 x 6.7 cm
2.02 oz / 2 x 2.6 in
26627



SPIRITS

75 ml / 4 x 10 cm
2.53 oz / 1.6 x 3.9 in
2995



WHISKY

370 ml / 8.8 x 10.1 cm
12.51 oz / 3.5 x 4 in
26638/1

Capacity (ml) / width x height (cm). The decanter height is specified without a stopper. The width measurements refer to the bottom of decanters and to the top edge of all other shapes. Whisky Set is available in clear crystal and all basic colours, with a gold or platinum decoration. Whisky Set is available in a smooth design, with a pebble cut or with various engraved motifs. Customisable with a coat of arms or initials.



SPIRITS
OCEAN GREEN

60 ml / 5.1 x 6.7 cm
2.02 oz / 2 x 2.6 in
26627



SPIRITS
ALEXANDRITE

60 ml / 5.1 x 6.7 cm
2.02 oz / 2 x 2.6 in
26627



SPIRITS
BERYL

60 ml / 5.1 x 6.7 cm
2.02 oz / 2 x 2.6 in
26627



SPIRITS
TOPAZ

60 ml / 5.1 x 6.7 cm
2.02 oz / 2 x 2.6 in
26627



SPIRITS
ELDOR

60 ml / 5.1 x 6.7 cm
2.02 oz / 2 x 2.6 in
26627



SPIRITS
ROSALIN

60 ml / 5.1 x 6.7 cm
2.02 oz / 2 x 2.6 in
26627



SPIRITS
AQUAMARINE

60 ml / 5.1 x 6.7 cm
2.02 oz / 2 x 2.6 in
26627



SPIRITS
SMOKE

60 ml / 5.1 x 6.7 cm
2.02 oz / 2 x 2.6 in
26627

Capacity (ml) / width (upper rim) x height (cm). Whisky Set is available in clear crystal and all basic colours, with a gold or platinum decoration. Whisky Set is available in a smooth design, with a pebble cut or with various engraved motifs. Customisable with a coat of arms or initials.



HERITAGE

DRINKING SETS

JUST LIKE FAMILY SILVERWARE IS PASSED ON FROM GENERATION TO GENERATION, MOSER TEND THE MASTERFUL CRAFTSMANSHIP OF ITS GLASSMAKERS.

This results in continuity: collections that are produced unchanged for decades. Though the world around us constantly changes, the handicraft of unmatched quality remains a valuable heritage for all lovers of crystal.

MARIA THERESA

DESIGN: 1913

ART WITHOUT EQUAL

This legendary drinking collection was inspired by a baroque table set used in the Schönbrunn Palace in Vienna during the reign of Austrian Empress and Czech Queen Maria Theresa.

Using lead-free crystal and the masterful skills of Karlsbad glassblowers, cutters and engravers, Leo Moser elevated the design to a true work of art.



BOWL
MARIA THERESA

42 x 25.3 cm
16.5 x 9.9 in
801



BOWL
WATTEAU

42 x 25.3 cm
16.5 x 9.9 in
801

DUE TO THE DIFFICULTY
OF ITS PRODUCTION,
THE MARIA THERESA SET
IS AMONG THE MOST
LUXURIOUS SHOWCASES OF
MOSER CRAFTSMANSHIP.

The set is decorated with two different types of engraved art. The original rococo décor from 1913 is composed of ornaments of fine acanthine leafwork and flower baskets. In the 1930s, engraver Konstantin Hable Sr. expanded the set with a version featuring gallant figural motifs based on rococo paintings by J. A. Watteau. Another prime example of how the glassmaking craft is passed on from generation to generation is the further expansion of the set by the addition of the Belvedere bowl with yet another difficult engraving, which was designed by Konstantin Hable Jr. another twenty years later.

**WATER**

1500 ml / 10.5 x 20.9 cm
1.5 qt. / 4.1 x 8.2 in
10639

**WINE**

1000 ml / 12.3 x 31 cm
1 qt. / 4.8 x 12.2 in
10630/I

**WHITE WINE**

210 ml / 7.8 x 15.6 cm
7.1 oz / 3.1 x 6.1 in
10622

**RED WINE**

290 ml / 8.7 x 17.5 cm
9.8 oz / 3.4 x 6.9 in
10621

**CHAMPAGNE**

140 ml / 4.5 x 20.3 cm
4.73 oz / 1.8 x 8 in
10631/x/f

**WATER**

320 ml / 7 x 12.1 cm
10.82 oz / 2.8 x 4.8 in
10638/I

**SPIRITS**

35 ml / 3.9 x 5.8 cm
1.18 oz / 1.5 x 2.3 in
10638/V

**WHISKY**

380 ml / 8.8 x 9.5 cm
12.84 oz / 3.5 x 3.7 in
10628/O

Capacity (ml) / width x height (cm). The decanter height is specified without a stopper. The width measurements refer to the bottom of decanters and jugs and to the top edge of all other shapes. The Maria Theresa set is available in clear crystal, in a cut version or with Maria Theresa and Watteau engraved motifs. Customisable with a coat of arms or initials.

THOMAS

DESIGN: 1929 / LEO MOSER

FUNCTIONALISM FOREVER

Leo Moser's production clearly demonstrates how flexibly he was able to respond to new trends. The simple facet cut of the glasses, decanter and jug indicates a clear preference for functionality over form. Despite the absence of gilded and ornamental decorations or complex cut, the Thomas collection does not look plain and leaves an impression of confidence and timelessness instead. This is further evidenced by the fact that the list of owners of this set includes personalities such as the Rampur maharajah.



WINE

1000 ml / 13 x 33.9 cm
1 qt. / 5.1 x 13.3 in
14010/I



WATER

1500 ml / 13 x 19.9 cm
1.5 qt. / 5.1 x 7.8 in
14019

Leo Moser, who became the Art and Technical Director of the glassworks in 1916, spent the late 1920s and early 1930s intensely focused on developing coloured glass.

Moser's secret recipes from that period remain one of the pillars of the brand to this day. Thomas was one of the first drinking collections where colours played a major role.

Capacity (ml) / width x height (cm). The decanter height is specified without a stopper. The width measurements refer to the bottom of decanters and jugs. The Thomas set is available in clear crystal and all basic colours. Customisable with a coat of arms or initials.



**WHITE WINE**

230 ml / 10,4 x 18,6 cm
7.77 oz / 4.1 x 7.3 in
14001/1/2

**RED WINE**

270 ml / 11,3 x 19,7 cm
9.12 oz / 4.4 x 7.8 in
14001

**LIQUEUR**

50 ml / 6,8 x 12 cm
1.69 oz / 2.7 x 4.7 in
14005

**WATER**

290 ml / 10,2 x 14 cm
9.8 oz / 4 x 5.5 in
14018/1

**SPIRITS**

60 ml / 6 x 8.7 cm
2.02 oz / 2.4 x 3.4 in
14018/V

**WHISKY**

200 ml / 8,9 x 11.1 cm
6.76 oz / 3.5 x 4.4 in
14008

**CENTREPIECE**

23 x 15.4 cm
9.1 x 6.1 in
14000/N

**SMALL BOWL**

13.5 x 5.8 cm
5.3 x 2.3 in
14012

**CHAMPAGNE
CLEAR CRYSTAL**

150 ml / 8 x 21.9 cm
5.07 oz / 3.1 x 8.6 in
14011/x/f

**CHAMPAGNE
ELDOR**

150 ml / 8 x 21.9 cm
5.07 oz / 3.1 x 8.6 in
14011/x/f

**CHAMPAGNE
TOPAZ**

150 ml / 8 x 21.9 cm
5.07 oz / 3.1 x 8.6 in
14011/x/f

**CHAMPAGNE
ROSA LIN**

150 ml / 8 x 21.9 cm
5.07 oz / 3.1 x 8.6 in
14011/x/f

**CHAMPAGNE
BERYL**

150 ml / 8 x 21.9 cm
5.07 oz / 3.1 x 8.6 in
14011/x/f

**CHAMPAGNE
ALEXANDRITE**

150 ml / 8 x 21.9 cm
5.07 oz / 3.1 x 8.6 in
14011/x/f

**CHAMPAGNE
AQUAMARINE**

150 ml / 8 x 21.9 cm
5.07 oz / 3.1 x 8.6 in
14011/x/f

PARIS

DESIGN: 1925 / RUDOLF WELS



ARTISTICALLY CUT JEWELS

The design of the collection bears the signs of the strong architectonic inclination of its author, Rudolf Wels. Each element is composed of several geometrical shapes that must be cut with absolute precision to flow perfectly from one to another. Any deviation from symmetry is instantly revealed. On the larger glasses, attention is immediately drawn to the pair of large crystal brilliants that separate the stem from the foot and the chalice.

RUDOLF WELS

During his studies in Vienna, Wels also collaborated with Adolf Loos. In the 1920s and 30s, his designs served as the foundation for a number of spa buildings in Karlsbad. He also drafted the project for the renovation of the Moser glassworks in 1921. He designed decorative objects, vases of black hyalite with etched gilded décors and with Anamoroplastic décors, and occasionally even worked on drinking glassware.



**WINE**

720 ml / 11.8 x 31.8 cm
24.34 oz / 4.6 x 12.5 in
13170/PO/II

**WINE**

270 ml / 10.2 x 22.5 cm
9.12 oz / 4 x 8.9 in
13161/PO

**CHAMPAGNE**

150 ml / 11.1 x 12.7 cm
5.07 oz / 4.4 x 5 in
13169/PO

**LIQUEUR**

85 ml / 7.3 x 15 cm
2.87 oz / 2.9 x 5.9 in
13164/PO

**WATER**

280 ml / 9.6 x 16 cm
9.46 oz / 3.8 x 6.3 in
13168/PO/I

**WATER**

180 ml / 8.6 x 14.2 cm
6.08 oz / 3.4 x 5.6 in
13168/PO/II

Capacity (ml) / width x height (cm). The decanter height is specified without a stopper. The width measurements refer to the bottom of decanters and to the top edge of all other shapes. PO = thin gilded rim. The Paris set is only available in clear crystal.

BAROQUE

DESIGN: 1913 / ARNOLD ZADIKOW



CRYSTAL CLEAR BAROQUE

The Baroque drinking collection based on the designs of Arnold Zadikow from 1936 is among the most technically demanding collections in the Moser repertoire. The shape of the glasses and their rich engraved décor in particular build on patterns typical for the 18th century.

The collection is characterised by its engraved décor of dense acanthine leafwork that covers the entire shell of the chalices and reappear on the foot as well. The very architecture of the glasses, decanter or jug is similarly captivating. Zadikow also designed several vases and bowls with the same type of engraved ornament.

Cat. no. 18510/I, width (bottom edge) x height: 11.4 x 24.7 cm / 4.5 x 9.7 in. The decanter height is specified without a stopper. The Baroque set is only available in clear crystal, with an engraved motif.



**WHITE WINE**

150 ml / 7.6 x 12.8 cm
5.07 oz / 3 x 5 in
18502

**RED WINE**

210 ml / 8.3 x 14.2 cm
7.1 oz / 3.3 x 5.6 in
18501

**CHAMPAGNE**

120 ml / 5.4 x 16.2 cm
4.06 oz / 2.1 x 6.4 in
18511/f

**LIQUEUR**

70 ml / 5.9 x 10 cm
2.37 oz / 2.3 x 4 in
18504

**WATER**

290 ml / 7.3 x 12.4 cm
9.81 oz / 2.9 x 4.9 in
18518/II

**WATER**

1500 ml / 12.3 x 22.6 cm
1.5 qt. / 4.8 x 8.9 in
18519

**WHISKY**

370 ml / 9.4 x 9.5 cm
12.51 oz / 3.7 x 3.7 in
18508/O

**SMALL BOWL**

11.5 x 6.5 cm
4.5 x 2.6 in
18512

GIANT SNIFTERS

DESIGN: 1957 / FRANTIŠEK CHOCHOLATÝ & RUDOLF SCHWEDLER

A SUCCESS OF GIANT PROPORTIONS

This unique hexad of glasses, the shape and size of which correspond to six different human physiognomies, was created in 1957 on the occasion of the 100th anniversary of the Moser glassworks. The then manager of the glassworks' Prague shop, František Chocholatý, together with his colleague Rudolf Schwedler also took the opportunity to found the Giant Snifters Club, which allows any friend of Moser luxury crystal to become a member.

The set was introduced at film festivals in Karlsbad, Monte Carlo and Sorrento. A year later, it received the Grand Prix award at

EXPO 58 in Brussels as part of a broader presentation of the brand. Slim Lady, Long Fellow, Long Face, Moon Face, Stout Gentleman and Big Bertha are welcome guests in any society and know how to get things flowing.

Each glass is unique by its shape, size and the clink it makes. The glasses are also perfectly balanced, allowing them to dance on the foot. Pick the glass you find the most personable, spin it up on the edge of the foot and pour the aperitif or digestif until the glass comes to a stop. It's not as easy as it may seem...





GIANT SNIFTER
SLIM LADY
CLEAR CRYSTAL

440 ml / 7 x 46 cm
14.87 oz / 2.8 x 18.1 in
26020



GIANT SNIFTER
LONG FELLOW
CLEAR CRYSTAL

1000 ml / 9.5 x 42.8 cm
1 qt. / 3.7 x 16.9 in
26021



GIANT SNIFTER
LONG FACE
CLEAR CRYSTAL

1850 ml / 9.3 x 39.3 cm
1.96 qt. / 3.7 x 15.5 in
26022



GIANT SNIFTER
MOON FACE
ELDOR

2700 ml / 14.2 x 32.5 cm
2.85 qt. / 5.6 x 12.8 in
26023



GIANT SNIFTER
STOUT GENTLEMAN
ROSALIN

3200 ml / 12.4 x 27.1 cm
3.38 qt. / 4.9 x 10.7 in
26024



GIANT SNIFTER
BIG BERTHA
BERYL

4700 ml / 20.4 x 23.6 cm
4.97 qt. / 8 x 9.3 in
26025

The Giant Snifters set is available in clear crystal and Moser colours, with each shape having an assigned colour of its own. Available in three sizes - from truly giant snifters to a gift series of miniatures. The largest series can also be used for decorative purposes for remarkable floral arrangements. Capacity (ml) / width (upper rim) x height (cm). Customisable with a coat of arms or initials.

CUSTOM PRODUCTION

THE UNIQUENESS OF SPECIAL COLLECTIONS MADE TO ORDER ACCORDING TO THE WISHES OF OUR CLIENTS OR IN COLLABORATION WITH RENOWNED DESIGNERS BRINGS A NEW DIMENSION TO LUXURY.

Every work of art created this way is characterised by hand-crafting down to the most minute details and a unique combination of imagination, individual approach and passion. Custom production represents a living example of the fact that the customer always comes first in Moser and that we are open to fulfilling practically any wish.

Custom production allows further developing of the skills of Karlsbad glassmakers, pushing the boundaries of the impossible and, if necessary, overcoming new challenges. We take it personally.



SANDS OF TIME

DESIGN: MOSER / CZAPEK & CIE

This unique hourglass was created in collaboration with a renowned Swiss manufactory. The hand-blown and cut chronometer made of clear, blue and green crystal measures a five-minute interval using grains of glass-making sand. The limited edition of only 18 pieces was introduced at the jewellery and watch fair Baselworld 2019 and sold out within a mere month.

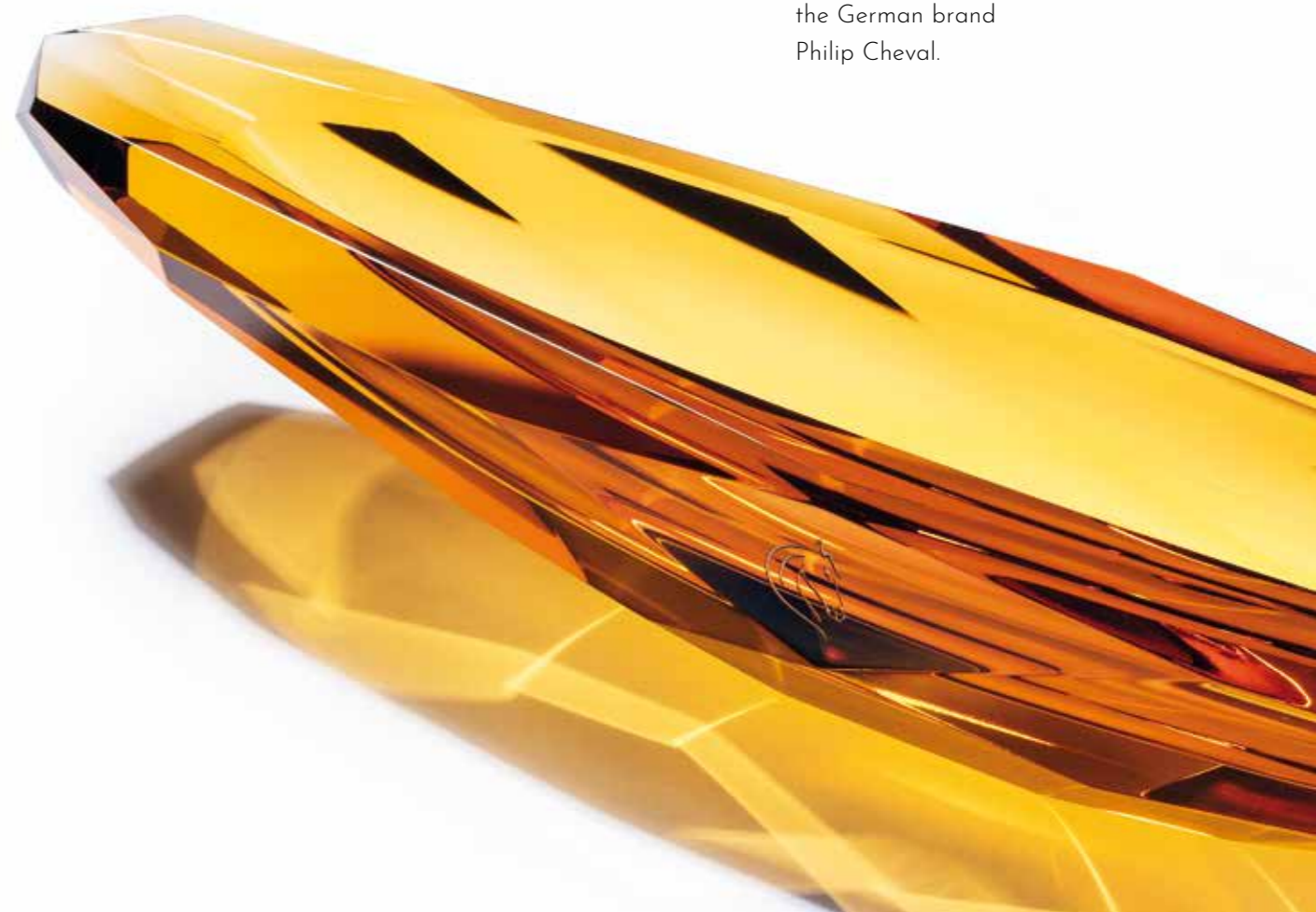


LA TOPAS

DESIGN: MOSER / PHILIP CHEVAL

In a traditional view, every gentleman looks good with a glass of whisky and a nice cigar. But a cigar goes hand in hand with a special ashtray. Its shape is inspired by J-class yachts, made popular by the America's Cup, the oldest regatta in the world (since 1851).

Its honey-brown colour references the topaz, a semi-precious stone also found in Czech deposits. The exclusive bespoke project was developed in collaboration between our glassworks and the German brand Philip Cheval.



MOSER & ASPREY



DECANTER WITH THE QUEEN'S PET DOG

In collaboration with Moser glassworks, the company Asprey designed a special edition of decanters on the occasion of the sixtieth anniversary of Queen Elizabeth II ascending the throne. The limited edition was inspired by Welsh Corgis, a breed that the Queen has been keeping since she was 18 when she received one as a birthday present.

Like previous sets of decanters with animal-head stoppers, each specimen from the Corgi series has an assigned number from 1 to 60.

Photo on the right: Leopard Head decanter created in sterling silver, handcrafted in Asprey's London workshops.



MOSER AT THE ROYAL COURT



EDWARD VII
KING OF THE UNITED KINGDOM



ALEXANDRA
QUEEN OF THE UNITED KINGDOM

Moser and the British royal court has been inextricably linked since 1907 when Edward VII ordered the aptly named Royal collection.

The set was decorated with a hand-painted initial of the king and his wife Alexandra. Karlsbad glassmakers did not disappoint, and on 25th January 1908, the king awarded Moser the title of purveyor to the court.



SPLENDID FOR A PRINCESS

Moser continued with the "king's glass" tradition even after the war in 1947. At that time, the royal family in London received its second drinking set (after Royal) from the Karlsbad glassworks. The Splendid collection was presented by Czechoslovak president Edvard Beneš as a wedding gift to Princess Elizabeth. The set numbering 178 pieces was decorated with the E initial and the crown of the English princess. Five years later, she became the Queen.

WELCOME TO AN EXCLUSIVE COMPANY

Ownership of Moser crystal was always a matter of prestige. Over the history of the brand's existence, the imaginary Moser Family has been joined by a multitude of prominent personalities. These include not only Czech presidents Tomáš Garrigue Masaryk and Václav Havel, but also names such as the Queen Elizabeth II of England or Duchess Camilla, Spanish kings Juan Carlos I and Philip VI, Norwegian royal couple Harald V and Sonja, popes John Paul II and Benedict XVI or the former American Secretary of State Madeleine Albright.

Moser has similarly entranced a number of stars of the silver screen. Among these are, for instance, Robert Redford, Michael Douglas, John Malkovich, Judi Dench, Pink or Elton John.



BASIC COLOURS



ELDOR, TOPAZ, ROSALIN, ALEXANDRITE



AQUAMARINE, BERYL, OCEAN GREEN, SMOKE

UNDERLAID COLOURS



AURORA, AMETHYST, ROSE



BLUE, GREEN, RESEDA

OVERLAID COLOURS



AURORA, AMETHYST, ROSE



BLUE, GREEN, RESEDA

IRREPRODUCIBLE MAGIC OF HANDICRAFT

From its founding in 1857 to this day, Moser glassworks remain loyal to handicraft. Every artefact is created through hours of focused effort as the hands of the masters work the noble material into the shape of drinking sets, vases or other decorative objects. None of the products is or ever will be perfectly identical. That is the beauty of traditional production, where the main role is played by a person, not a machine.

COLOUR AS A TRADE MARK

Groundbreaking work with colour became one of the distinguishing marks that defined the Moser brand in the history of modern glassmaking.

In the early 19th century, Leo Moser worked in Berlin laboratories on developing unique colour shades that permeate Moser artistic production to this day. Their names are derived from precious stones: these include beryl, eldor, topaz, rosalin, alexandrite and aquamarine. It is worth mentioning the unique property of the alexandrite hue, in particular, which changes its colour from violet to light blue under artificial light.

Basic colours are also combined together through overlaying (colour on top of the crystal, can be cut past), underlaying (colour underneath the crystal), and can be accompanied by complementary colours such as jade green, orange, white or yellow enamel, and more.

Any slight deviations in dimensions or colour are evidence that the items are handmade by our master craftsmen.

MARKS OF BEAUTY IN MOSER CRYSTAL

Hand-crafted Moser pieces carry the energy, feeling, skill and heart that our master glassmakers invest into them. You may thus notice that no two pieces are ever fully identical. Every bubble, small heterogeneity of the material or slight deviation in dimensions are solid proof that the art is hand-made.

The distinctive penmanship of our glassblowers, engravers, cutters and painters has earned the admiration of the whole world. Moser products adorn royal palaces, decorate the tables at aristocratic weddings and serve leading state officials on a daily basis.

We are proud of our handiwork with all that it entails. Because its value lasts and will always be an unmistakable mark of your and our uniqueness.





CZECH REPUBLIC / LONDON / NEW YORK / TAIPEI
TOKYO / DUBAI / PARIS / MOSCOW / BEIJING

For more information about
our sales galleries, please visit:

MOSER.COM

Customer service:

moser@moser.com, +420 730 550 520